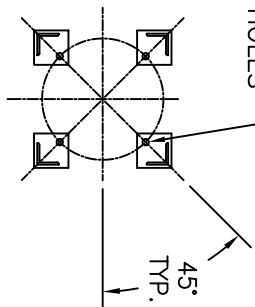


(4) 3/4" DIA BOLT HOLES  
LOCATED AS SHOWN  
ON 14.12 B.C.D.

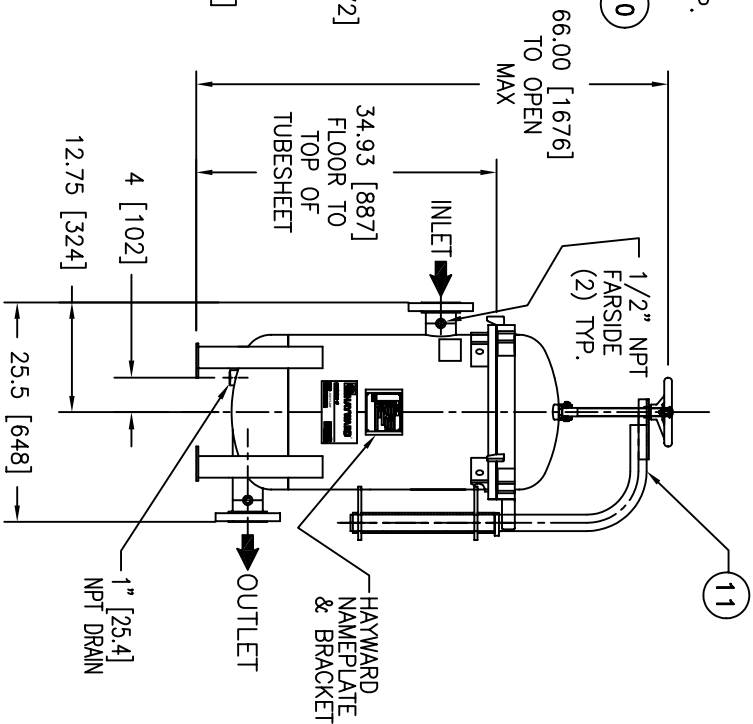
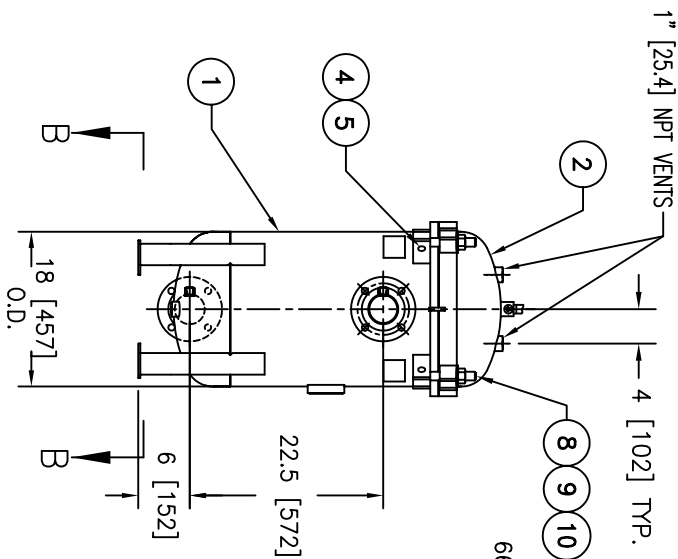


SECTION B-B

ITEM	PART NAME	MATERIAL
1	BODY	SA240 316/316L
2	COVER	SA240 316/316L
3	O-RING	BUNA-N
4	PIN	SA193 B7 ZINC PL
5	SNAP RING	STEEL ZINC PL
6	BASKET RESTRAINER	316 SS
7	FILTER BAG RETAINER	316 SS
8	EYE BOLT	SA193 B7 ZINC PL
9	HEX NUT	SA194 2H ZINC PL
10	WASHER	STEEL ZINC PL
11	DAVIT ASSEMBLY	CARBON STEEL

**NOTES:**

- UNITS ARE TO BE DESIGNED, FABRICATED & "U" STAMPED IN ACCORDANCE WITH ASME SECT. VIII DIV. 1 BOILER & PRESSURE VESSEL CODE, IN COMPLIANCE TO LATEST ADDENDA.
- INLET / OUTLET FLANGE CONNECTIONS PER ANSI B 16.5.
- DESIGN PRESSURE: 150 PSI (MAWP)  
DESIGN TEMPERATURE 250° F.  
MDMT -- -20° F @ 150 PSI.
- ALL DIMENSIONS ARE IN INCHES / (MM).
- ALL BOLT HOLES ARE TO STRADDLE NATURAL CENTERLINES.
- APPROX. WEIGHT (DRY) 574 LB. (260 KG.)



ELECTRONIC FILE NAME: HD0303TS.DWG  
REF. ECR D666 DATE 01/23/06

UNAUTHORIZED USE, MANUFACTURE OR REPRODUCTION IN WHOLE OR IN PART IS PROHIBITED. DRAWING, DESIGN AND OTHER DISCLOSURES PROPERTY OF EATON FILTRATION, LLC

		<b>EATON FILTRATION, LLC</b> 900 FAIRMOUNT AVENUE, ELIZABETH, NEW JERSEY 07207	
NAME: MAXILINE MBF0302HD FILTER VESSEL 3" 150# RF INLET/TANGENTIAL OUTLET STAINLESS STEEL		TAG NO.: VESSEL CODE: MBF-0302-AB10-030A-UT-11HD PART NUMBER: F3AV03000003	
CERTIFIED FOR:	P.O. NO.:	REG. NO.:	QUOTE NO.:
DRAWN SD/ID	DATE 11/20/00	CERT. LF	DATE 11/29/00
SIZE A	DWG NO.	HDO303TS	REV D