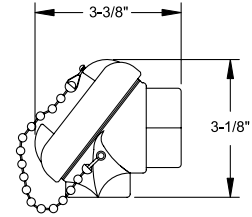


NEMA 4 & 4X REPLACEMENT HEADS AND TERMINAL BLOCKS

CAST ALUMINUM – gasketed screw cover

NEMA 4 with gasketed screw cover and stainless steel chain;
4-post ceramic terminal block included. For epoxy-coated, NEMA
4X, add suffix-E to part#. (e.g., PH01E)

Ordering Code	Process Conn.	Conduit Conn.
PH01	1/2"	1/2"
PH02	1/2"	3/4"
PH03	3/4"	3/4"

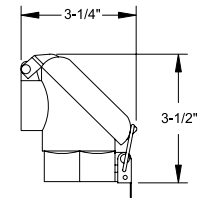


PH01 - PH06

CAST IRON – NEMA 4, gasketed screw cover

NEMA 4 with gasketed screw cover and stainless steel chain;
4-post ceramic terminal block included. For epoxy-coated, NEMA
4X, add suffix-E to part #. (e.g., PH04E)

Ordering Code	Process Conn.	Conduit Conn.
PH04	1/2"	1/2"
PH05	1/2"	3/4"
PH06	3/4"	3/4"

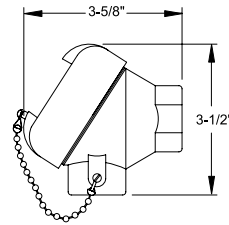


PH45

CAST ALUMINUM – flip-top cover

NEMA 4 with flip-top cover and latching closure, 4-post ceramic
terminal block included.

Ordering Code	Process Conn.	Conduit Conn.
PH45	1/2"	3/4"



PH47

316 STAINLESS STEEL – NEMA 4X, gasketed screw cover

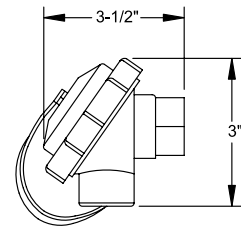
NEMA 4X with gasketed screw cover and stainless steel chain;
4-post ceramic terminal block included.

Ordering Code	Process Conn.	Conduit Conn.
PH47	1/2"	3/4"

BLACK POLYPROPYLENE – NEMA 4, gasketed screw cover

NEMA 4 with gasketed screw cover, 4-post ceramic terminal block
included.

Ordering Code	Process Conn.	Conduit Conn.
PH23	1/2"	3/4"

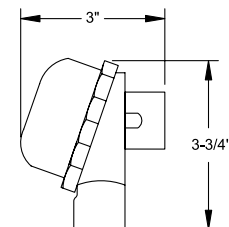


PH23 - PH24

WHITE POLYPROPYLENE – NEMA 4, gasketed screw cover

NEMA 4 with gasketed screw cover and stainless steel chain;
4-post ceramic terminal block included.

Ordering Code	Process Conn.	Conduit Conn.
PH24	1/2"	3/4"



PH26

NYLON – NEMA 4, gasketed screw cover

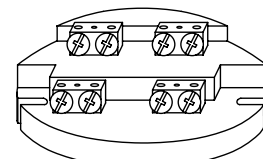
Gasketed screw cover, 4-post ceramic terminal block included.

Ordering Code	Process Conn.	Conduit Conn.
PH26	1/2"	1/2"

CERAMIC TERMINAL BLOCK REPLACEMENTS

For NEMA 4 heads, brass terminals

Ordering Code	No. of Terminals	Max. Wire Size
PH39	2	8 AWG.
PH40	3	8 AWG.
PH41	4	8 AWG.
PH42	6	14 AWG.



PH41