

Range Tables

Standard Ranges

Pressure – psi		
Range	Figure interval	Minor graduation
0/15	1	0.1
0/30	5	0.2
0/60	5	0.5
0/100	10	1
0/160	20	2
0/200	20	2
0/300	50	2
0/400	50	5
0/600	50	5
0/800	100	10
0/1000	100	10
0/1500	200	20
0/2000	200	20
0/3000	500	20
0/5000	500	50
0/6000	500	50
0/10,000	1000	100
0/20,000	2000	200
0/30,000	5000	200
0/50,000	5000	500
0/80,000	10,000	1000
0/100,000	10,000	1000

Compound				
Range	Figure interval		Minor graduation	
	in Hg	psi	in Hg	psi
30" Hg/15 psi	5	3	0.5	0.2
30" Hg/30 psi	10	5	1	0.5
30" Hg/60 psi	10	10	1	1
30" Hg/100 psi	10	10	2	1
30" Hg/150 psi	10	20	5	2
30" Hg/200 psi	30	20	5	2
30" Hg/300 psi	30	50	5	2
30" Hg/400 psi	30	50	5	5
30" Hg/500 psi	30	50	5	5
30" Hg/600 psi	30	50	10	5

Combination					
Range		Figure interval		Minor graduation	
inner-psi	outer-ft H ₂ O	psi	ft H ₂ O	psi	ft H ₂ O
0/15	0/34	3	5	0.5	0.5
0/30	0/70	5	10	0.5	1
0/60	0/140	5	20	0.5	5
0/100	0/230	10	20	1	2
0/160	0/370	20	50	2	5
0/200	0/460	20	50	5	5
0/300	0/690	25	100	5	10

Vacuum		
Range	Figure interval	Minor graduation
30/0 in. Hg	5 in	0.2 in
34/0 ft H ₂ O	5 ft	0.5 ft

Retard		
Range	Figure interval	Minor graduation
0/15 psi retard to 30 psi	1 psi-30 psi	0.25 psi-5 psi
0/30 psi retard to 60 psi	2 psi-60 psi	0.2 psi-10 psi
0/60 psi retard to 100 psi	2 psi-100 psi	0.5 psi-10 psi
30" Hg vac/75 psi retard to 150 psi	5" Hg/15 psi-150 psi	1" Hg/1 psi-5psi
10" Hg vac/5 psi retard to 30" Hg vac	2" Hg/1 psi	0.2" Hg/0.1 psi
retard to 30" Hg vac	30" Hg	5" Hg
retard to 30 psi	30 psi	5 psi

Metric Ranges

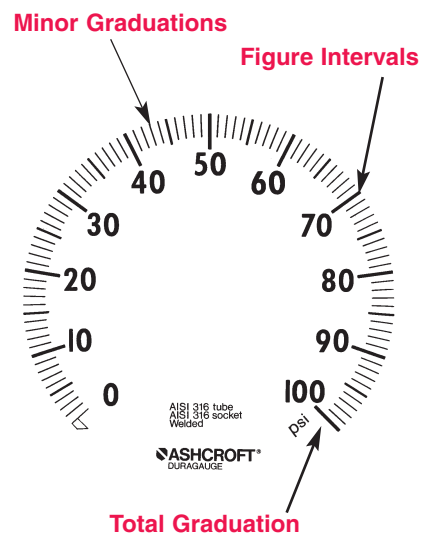
Pressure – kg/cm ² and bar			
Range	Figure interval	Minor graduation	Outer scale in psi
0/1	0.1	0.01	0/14
0/1.6	0.2	0.02	0/22
0/2.5	0.5	0.02	0/35
0/4	0.5	0.05	0/55
0/6	0.5	0.05	0/85
0/10	1	0.1	0/140
0/16	2	0.2	0/220
0/25	5	0.2	0/350
0/40	5	0.5	0/550
0/60	5	0.5	0/850
0/100	10	1	0/1400
0/160	20	2	0/2200
0/250	50	2	0/3500
0/400	50	5	0/5500
0/600	50	5	0/8500
0/1000	100	10	0/14,000
0/1600	200	20	0/22,000
0/2500	500	20	0/35,000
0/4000	500	50	0/55,000
0/6000	1000	50	0/85,000

Compound – kg/cm ² and bar			
Range	Figure interval	Minor graduation	Outer scale in psi
-1/0/1.5	0.2	0.02	30" Hg/20
-1/0/3	0.5	0.05	30" Hg/40
-1/0/5	0.5	0.05	30" Hg/70
-1/0/9	1	0.01	30" Hg/125
-1/0/15	2	0.02	30" Hg/215
-1/0/24	5	0.02	30" Hg/340

Vacuum – kg/cm ² and bar			
Range	Figure interval	Minor graduation	Outer scale
-1/0	0.1	0.01	30" Hg

Graduations and figure intervals

All Ashcroft dials have various total graduation marks, figure intervals and minor graduations. Standard dual scale metric ranges have a dominant metric inner scale. The outer scale is specified in psi. Some examples are shown. Duragauge gauges are made in accordance with ASME B40.1 entitled, "Gauges, Pressure, Indicating Dial Type – Elastic Element," Accuracy grade 2A ($\pm 0.5\%$ of span). The accuracy of a retard range gauge applies only to the expanded portion of the scale. The error in the compressed portion is -10% to $+20\%$ of the span. Maximum pressure at which a gauge is continually operated should not exceed 75% of full scale range. Consult customer service in Stratford, CT for non-standard dials.



Range Tables

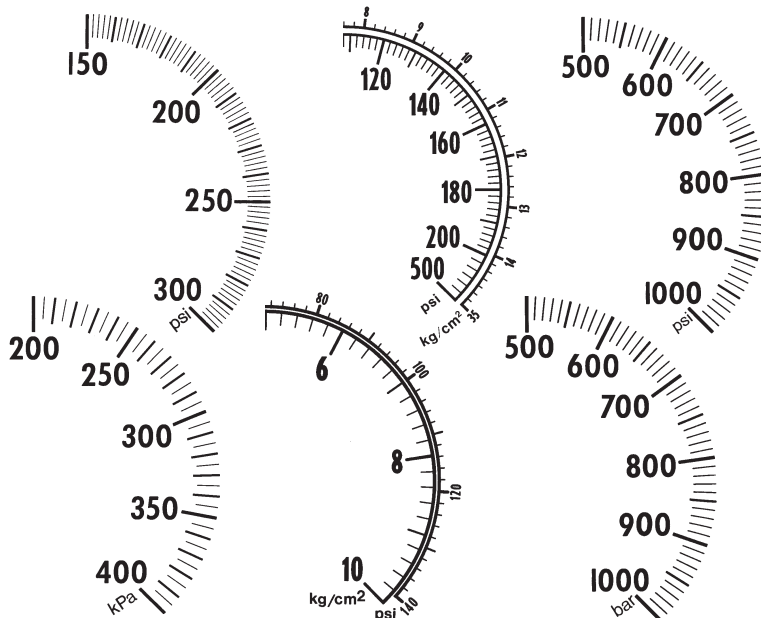
Metric Ranges

Pressure – (kPa) kilopascal			
Range	Figure interval	Minor graduation	Outer scale in psi
0/100	10	1	0/14
0/160	20	2	0/22
0/250	50	2	0/35
0/400	50	5	0/55
0/600	50	5	0/85
0/1000	100	10	0/140
0/1600	200	20	0/220
0/2500	500	20	0/350
0/4000	500	50	0/550
0/6000	500	50	0/850
0/10,000	1000	100	0/1400
0/16,000	2000	200	0/2200
0/25,000	5000	200	0/3500
0/40,000	5000	500	0/5500
0/60,000	5000	500	0/8500
0/100,000	10,000	1000	0/14,000
0/160,000	20,000	2000	0/22,000
0/250,000	50,000	2000	0/35,000*
0/400,000	50,000	5000	0/55,000*

Compound – (kPa) kilopascal			
Range	Figure interval	Minor graduation	Outer scale in psi
-100/0/150	50	5	30" Hg/20
-100/0/300	50	5	30" Hg/40
-100/0/500	50	10	30" Hg/70
-100/0/900	100	10	30" Hg/125
-100/0/1500	200	20	30" Hg/215
-100/0/2400	500	20	30" Hg/340

Vacuum – (kPa) kilopascal			
Range	Figure interval	Minor graduation	Outer scale
-100/0	10	1	30" Hg

* 200° Arc



Receiver gauge

These ranges apply to any unit of pressure, temperature, liquid level, flow, or other value specified. Units in psi pressure will be denoted on the dial unless specified. Available with input ranges of 3-15 psi or 3-27 psi.

Receiver Gauge Ranges			
0/1	0/75	30/80	100/600
0/2	0/80	5/110	200/700
0/3	0/85	20/120	100/800
0/4	0/90	40/120	200/800
0/5	0/95	20/150	300/800
0/6	0/100	30/150	400/800
0/7	0/120	40/150	450/800
0/8	0/140	50/150	500/800
0/9	0/160	30/180	650/800
0/10	0/180	130/180	200/900
0/11	0/200	100/200	400/900
0/12	0/250	20/220	700/900
0/14	0/300	40/220	200/1000
0/15	0/350	30/240	400/1000
0/16	0/400	100/240	500/1000
0/17	0/500	30/250	600/1000
0/18	0/600	50/250	800/1000
0/19	0/700	100/250	200/1100
0/20	0/760	30/300	400/1200
0/21	0/800	50/300	500/1200
0/25	0/900	80/300	600/1200
0/26	0/1000	100/300	1000/1500
0/28	0/1500	50/350	300/1600
0/30	0/2000	80/350	1000/1600
0/35	0/3000	150/350	600/1800
0/40	0/4000	100/400	900/1800
0/45	0/5000	150/400	1200/1800
0/50	0/10,000	50/500	700/2000
0/55	0/15,000	100/500	1000/2500
0/60	0/20,000	200/500	1500/2500
0/65	0/30,000	300/500	900/3000
0/70	0/50,000	200/700	1500/3000

Square Root Ranges			
0/5	0/70	0/300	0/1500
0/10	0/80	0/350	0/2000
0/15	0/90	0/400	0/3000
0/20	0/100	0/500	0/4000
0/25	0/125	0/600	0/5000
0/30	0/150	0/700	0/10,000
0/40	0/175	0/800	
0/50	0/200	0/900	
0/60	0/250	0/1000	

Compound Ranges			
30" Hg/0/15 psi			
30" Hg/0/30 psi			
30" Hg/0/60 psi			
30" Hg/0/100 psi			
30" Hg/0/150 psi			
30" Hg/0/500 psi			
30" Hg/0/800 psi			