

# VALVE COMMUNICATION AND CONTROL

LINEAR POINT SENSOR



**HAWKEYE  
HK**



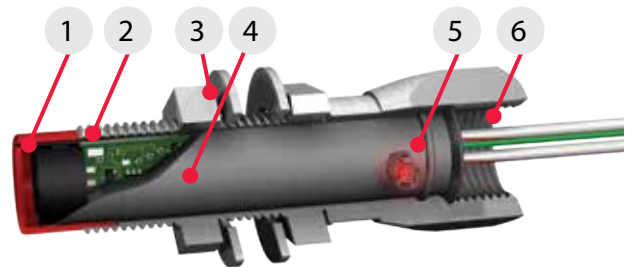
# Hawkeye HK

## Nonincendive and intrinsically safe for point sensing

The solid state Hawkeye sensor is ideal for point sensing in corrosive and hazardous process environments. The standard red/green LEDs also speed your setup and installation by confirming power up and switch status.

### Linear applications

Each pair (red and green) of Hawkeye sensors is tuned to operate independently in either long stroke or short stroke applications down to 6 mm [1/4 inch]. The Hawkeye may be triggered by existing valve hardware eliminating costly magnets and triggering systems and cutting installation time.



### Features

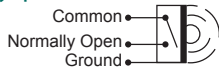
1. **Sensing head triggers on any metal**  
Inductive sensing technology detects metal targets at distances up to 4-6 mm, depending on target material.
2. **Stainless steel body is rugged and corrosion proof**  
Hawkeye sensors are machined from 316 stainless steel.
3. **Stainless steel washers and fasteners secure Hawkeye permanently to mount**  
Adaptor brackets are available in L or straight.
4. **Circuit is conformally coated and potted**  
Hawkeye sensor may be temporarily submersed and electronics are shock and vibration tolerant.
5. **High intensity LED brightly displays switch status**  
Red and green LEDs may be selected to indicate open or closed.
6. **1/2" conduit entry or mini-connector available**  
Choose from a direct conduit entry for hazardous areas or a plug-in mini-connector for rapid attachment in general purpose environments.

### Switching and sensor specifications

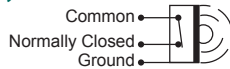
#### SST switching sensors (30, 31)

Configuration	(1) SST solid state sensor
Operations	Select either NO (30) or NC (31)
Maximum current inrush	1.0 amp
Maximum current continuous	0.1 amp @ 125 VAC/VDC
Minimum current	2.0 mA
Maximum leakage current	0.5 mA
Voltage range	8 - 125 VDC 24 - 125 VAC
Maximum voltage drop	6.5 volts @ 10 mA 7.5 volts @ 100 mA

#### Wiring diagram (30) Normally open



#### Wiring diagram (31) Normally closed



#### NAMUR sensors (40)

Configuration	(1) NAMUR sensor (EN 60947-5-6; I.S.)
Operation	Normally closed NAMUR sensors (solid state)
Voltage range	5 - 25 VDC
Current ratings	Target on <1 mA Target off >3 mA

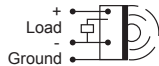
#### Wiring diagram (40)



#### Sourcing sensor (50)

Configuration	(1) PNP (Sourcing) sensor
Operation	Normally open (solid state)
Maximum current	200 mA
Minimum on current	2.0 mA
Maximum leakage current	Negligible
Voltage range	6 - 28 VDC
Maximum voltage drop	0.65 VDC

#### Wiring diagram (50)



### Specifications

#### Materials of construction

Housing and fasteners	316 stainless steel
Sensing head cover	Lexan® polycarbonate
LED Lens	Polycarbonate

#### Other specifications

Conduit connection	½" NPT
Wiring	36" (0.9 meter) length, 18 gauge multi-strand
Sensing distance	4-6 mm <i>(sensing distance will vary depending on target material)</i>
Temperature range	-40° C to 80° C (-40° F to 176° F)
Warranty	Five years

### Model selector

#### SERIES

HK Hawkeye (will trigger on any metal target)

#### FUNCTION

- 30 SST sensor (NO type sensor)
- 31 SST sensor (NC type sensor)
- 40 NAMUR (EN 60947-5-6; I.S.)
- 50 (1) 3-wire PNP normally open
- 51 (1) 3-wire PNP normally closed

#### HOUSING

- 7 Stainless steel

#### CONDUIT/CONNECTORS

- 7 ½" NPT
- 8 3-pin mini-connector in stainless steel

#### FEATURES

- SR Red LED
- SG Green LED

Model number example

HK 30 7 8 SG - OPTIONAL

#### MODEL NUMBER

Mounting hardware required and sold separately.

#### PARTNERSHIP ID

Some models may include 5-digit identification suffix.

### Ratings

Nonincendive <i>(Class I and II, Div. 2)</i>	Functions 30 and 31*
Intrinsically safe <i>(Ex ia, Zone 0 or Class I and II, Div. 1)</i>	Function 40*

#### Enclosure protection

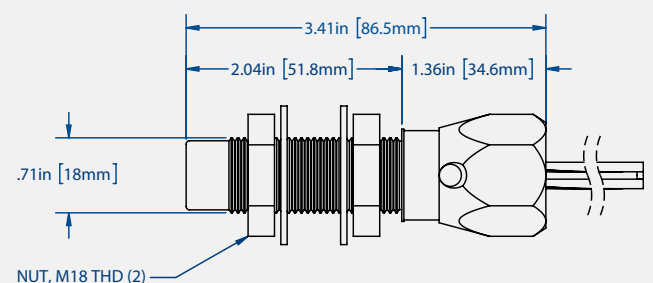
NEMA 4, 4X and 6	All models
Ingress Protection 67	All models

#### Approvals\*

See StoneL.com/approvals

\* Only models listed on StoneL's official website are approved per specific rating.

### Dimensions Inches [mm]



**Metso Flow Control Inc.**

**Europe**, Vanha Porvoontie 229, P.O. Box 304, FI-01301 VANTAA, Finland.  
Tel. +358 20 483 150. Fax +358 20 483 151

**North America**, 26271 US Hwy 59, Fergus Falls, MN 56537, USA.  
Tel. +1 218 739 5774. Fax +1 218 739 5776

**South America**, Av. Independência, 2500- Iporanga, 18087-101, Sorocaba-São Paulo, Brazil.  
Tel. +55 15 2102 9700. Fax +55 15 2102 9748/49

**Asia Pacific**, Haw Par Centre #06-01, 180 Clemenceau Avenue, Singapore 239922.  
Tel. +65 6511 1011. Fax +65 6250 0830

**China**, 11/F, China Youth Plaza, No.19 North Rd of East 3rd Ring Rd, Chaoyang District,  
Beijing 100020, China. Tel. +86 10 6566 6600. Fax +86 10 6566 2583.

**Middle East**, Roundabout 8, Unit AB-07, P.O. Box 17175, Jebel Ali Freezone, Dubai,  
United Arab Emirates. Tel. +971 4 883 6974. Fax +971 4 883 6836

**[www.metso.com/valves](http://www.metso.com/valves)**

Subject to change without prior notice.

