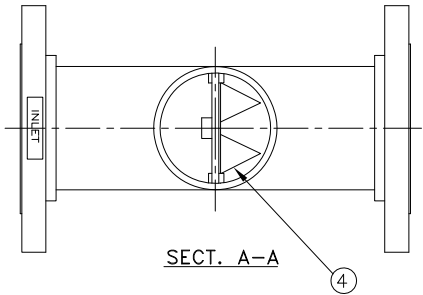
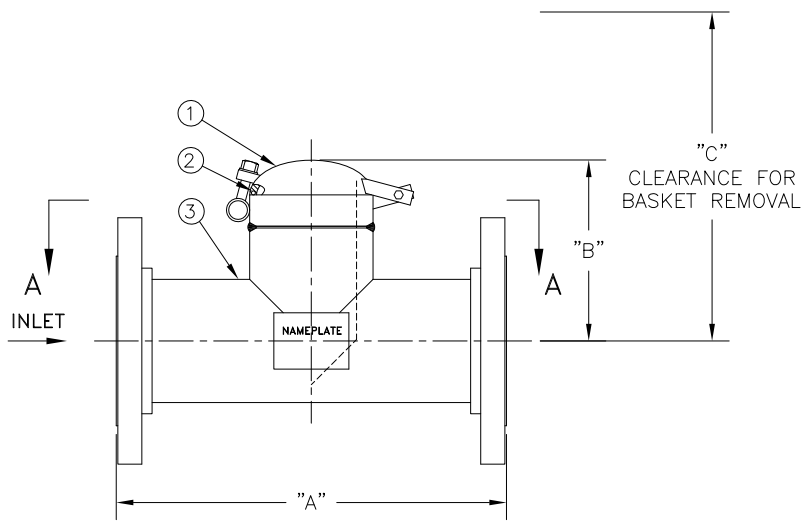


PIPE SIZE (NOMINAL)	DIMENSIONS			APPROX. WEIGHT (DRY)	PART NO.
	"A"	"B"	"C"		
	IN. (MM)	IN. (MM)	IN. (MM)	LBS. (KGS)	
14 (350mm)	32.00 / 813	17.12 / 435	40.00 / 1016	510 / 231.3	ST091140BR3TA
16 (400mm)	34.00 / 864	18.62 / 473	43.00 / 1092	625 / 283.5	ST091160BR3TA
18 (450mm)	38.00 / 965	21.12 / 536	50.00 / 1270	790 / 358.3	ST091180BR3TA
20 (500mm)	41.38 / 1051	23.62 / 600	56.00 / 1422	945 / 428.6	ST091200BR3TA
24 (600mm)	46.00 / 1168	27.12 / 689	65.00 / 1651	1435 / 650.9	ST091240BR3TA

REVISIONS				
REV	DESCRIPTION	BY	ECO	DATE
C	UPDATE TITLE BLOCK	FM	0104870	11/21/2014



NO.	PART NAME	MATERIAL
1	T-BOLT CLOSURE	CARBON STEEL
2	O-RING	BUNA-N
3	BODY	CARBON STEEL
4	BASKET	316 SSTL
	PERF. / MESH	



- NOTES:
1. STRAINER IS DESIGNED AND FABRICATED IN ACCORDANCE WITH ASME B31.1 POWER PIPING CODE.
 2. ALL DIMENSIONS ON IN INCHES / MM.
 3. ALL FLANGES CONFORM TO ASME STANDARD.
 4. DESIGN PRESSURE: 150 PSIG @ 150°F (10.3 BAR @ 65.6°C)

DRAWN BY FM		HYDRAULICS GROUP FILTRATION DIVISION <small>GALESBURG, MICHIGAN, USA • TINTON FALLS, NEW JERSEY, USA</small>														
SCALE AS DRAWN																
RESTRICTION RESTRICTED		TITLE MODEL 91 TEE STRAINER QUICK OPEN COVER SIZES 14" TO 24" 150#RF FLANGE CARBON STEEL														
SHEET 1 OF 1		DATE 4/17/98	SIZE A	DWG FILENAME SD091QC15	REV C											
<table border="1" style="width: 100%;"> <thead> <tr> <th colspan="2">CUSTOMER INFO</th> </tr> </thead> <tbody> <tr> <td>NAME</td> <td></td> </tr> <tr> <td>P.O. NO.</td> <td></td> </tr> <tr> <td>TAG NO.</td> <td></td> </tr> <tr> <td>S.O. NO.</td> <td></td> </tr> <tr> <td>PART NO.</td> <td>SEE TABLE</td> </tr> </tbody> </table>		CUSTOMER INFO		NAME		P.O. NO.		TAG NO.		S.O. NO.		PART NO.	SEE TABLE	<p style="font-size: small; text-align: center;">EATON CORPORATION - CONFIDENTIAL AND PROPRIETARY NOTICE TO PERSONS RECEIVING THIS DRAWING AND/OR TECHNICAL INFORMATION. THIS DOCUMENT, INCLUDING THE DRAWING AND INFORMATION CONTAINED THEREON IS CONFIDENTIAL AND IS THE EXCLUSIVE PROPERTY OF EATON AT ANY TIME. BY TAKING THE POSSESSION OF THIS DOCUMENT THE RECIPIENT ACKNOWLEDGES AND AGREES THAT THIS DOCUMENT CANNOT BE USED IN ANY MANNER ADVERSE TO THE INTEREST OF EATON AND THAT NO PORTION OF THIS DRAWING MAY BE COPIED OR OTHERWISE REPRODUCED WITHOUT THE PRIOR WRITTEN CONSENT OF EATON, IN THE CASE OF CONFLICTING CONTRACTUAL PROVISIONS, THIS NOTICE SHALL GOVERN THE STATUS OF THIS DOCUMENT. 1998 EATON CORPORATION - ALL RIGHTS RESERVED.</p>		
CUSTOMER INFO																
NAME																
P.O. NO.																
TAG NO.																
S.O. NO.																
PART NO.	SEE TABLE															