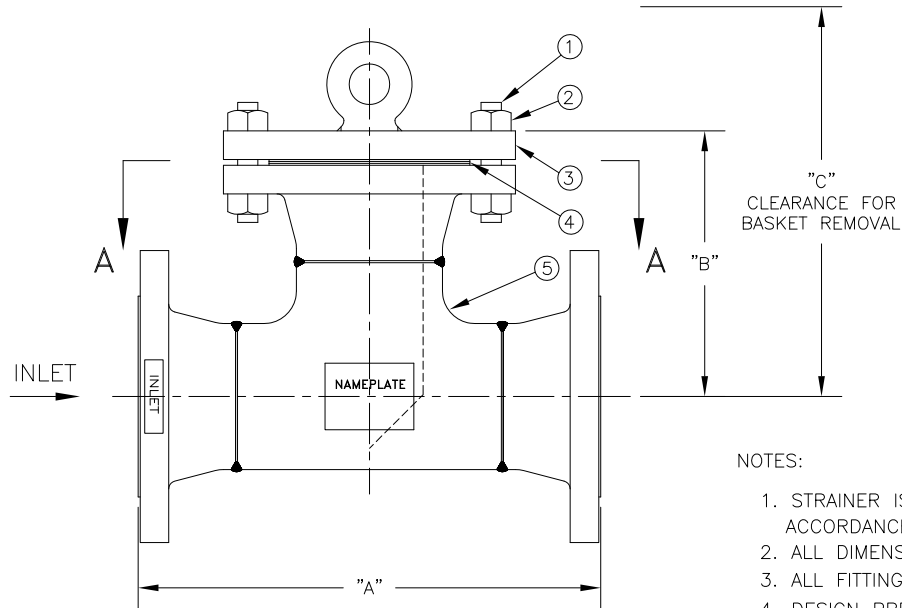


PIPE SIZE (NOMINAL)	DIMENSIONS			APPROX. WEIGHT (DRY) LBS. (KGS)	PART NO.
	"A" IN. (MM)	"B" IN. (MM)	"C" IN. (MM)		
2 (50mm)	10.75 / 273	6.31 / 160	15.00 / 381	45 / 20.4	ST091020DR3BA
3 (80mm)	13.25 / 336	7.81 / 198	18.00 / 457	85 / 38.6	ST091030DR3BA
4 (100mm)	15.25 / 387	8.94 / 227	21.00 / 533	135 / 61	ST091040DR3BA
5 (125mm)	17.75 / 451	10.31 / 262	24.00 / 610	180 / 81.5	ST091050DR3BA
6 (150mm)	19.25 / 489	11.13 / 283	26.00 / 660	250 / 113	ST091060DR3BA
8 (200mm)	23.00 / 584	13.19 / 335	31.00 / 787	400 / 181	ST091080DR3BA
10 (250mm)	26.50 / 673	15.19 / 386	35.00 / 889	570 / 258.5	ST091100DR3BA
12 (300mm)	30.50 / 775	17.31 / 440	40.00 / 1016	750 / 371	ST091120DR3BA

NO.	PART NAME	MATERIAL
1	STUDS	ASTM A193 GR. B7
2	NUTS	ASTM A194 GR. 2H
3	COVER	CARBON STEEL
4	GASKET	NON-ASBESTOS
5	BODY	CARBON STEEL
6	BASKET	316 SSSL
	PERF. / MESH	



CERTIFIED FOR:
P.O. NO.:
REG. NO.:
QUOTE NO.:
TAG NO.:

NOTES:

1. STRAINER IS DESIGNED AND FABRICATED IN ACCORDANCE WITH ANSI B31.1 POWER PIPING CODE.
2. ALL DIMENSIONS ON IN INCHES / MM.
3. ALL FITTINGS CONFORM TO ANSI STANDARD.
4. DESIGN PRESSURE: 710 PSIG @ 150° F (48.9 BAR @ 65.6°C)
635 PSIG @ 400°F (43.8 BAR @ 204.4°C)

UNAUTHORIZED USE, MANUFACTURE OR REPRODUCTION IN WHOLE OR IN PART IS PROHIBITED. DRAWING, DESIGN AND OTHER DISCLOSURES PROPERTY OF EATON FILTRATION, LLC

		EATON FILTRATION, LLC 70 WOOD AVENUE SOUTH, ISELIN, NEW JERSEY 08830			
		NAME MODEL 91 TEE STRAINER SIZES 2" TO 12" 300# RF FLANGE BOLTED COVER CARBON STEEL			
DRAWN AB	DATE 10/6/97	CERT. FM	DATE 10/6/97		
SIZE A	DWG NO	SD091BC3		REV G	

ELECTRONIC FILE NAME: SD091BC3.DWG
REF. ECR 0076239 DATE 9/20/12