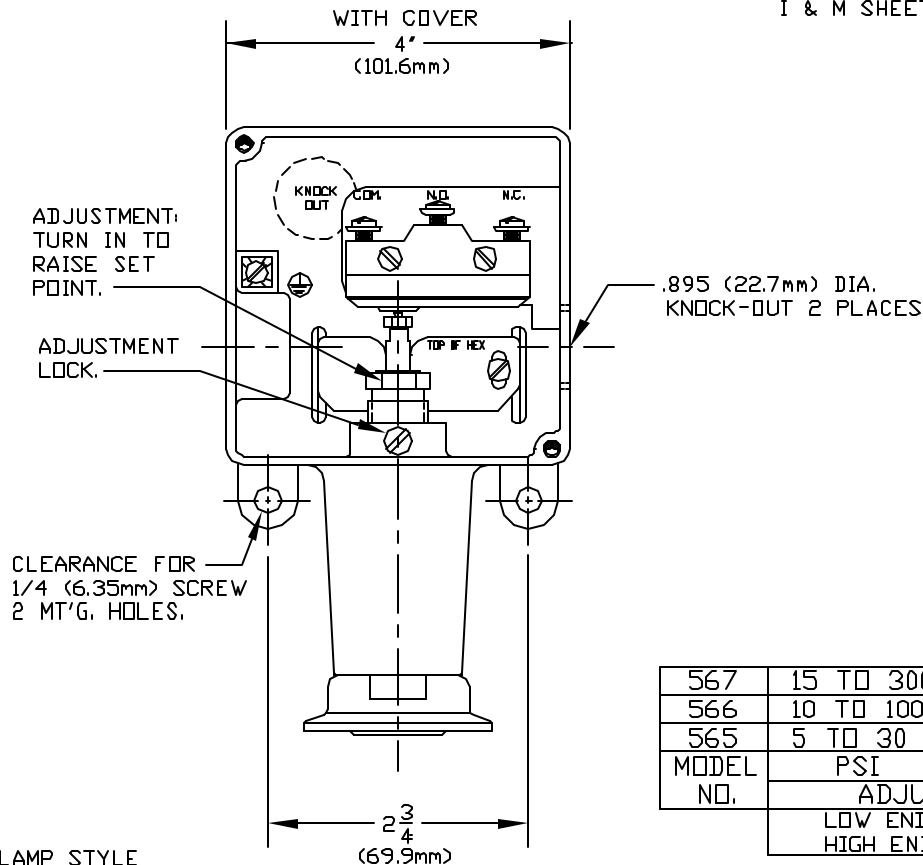
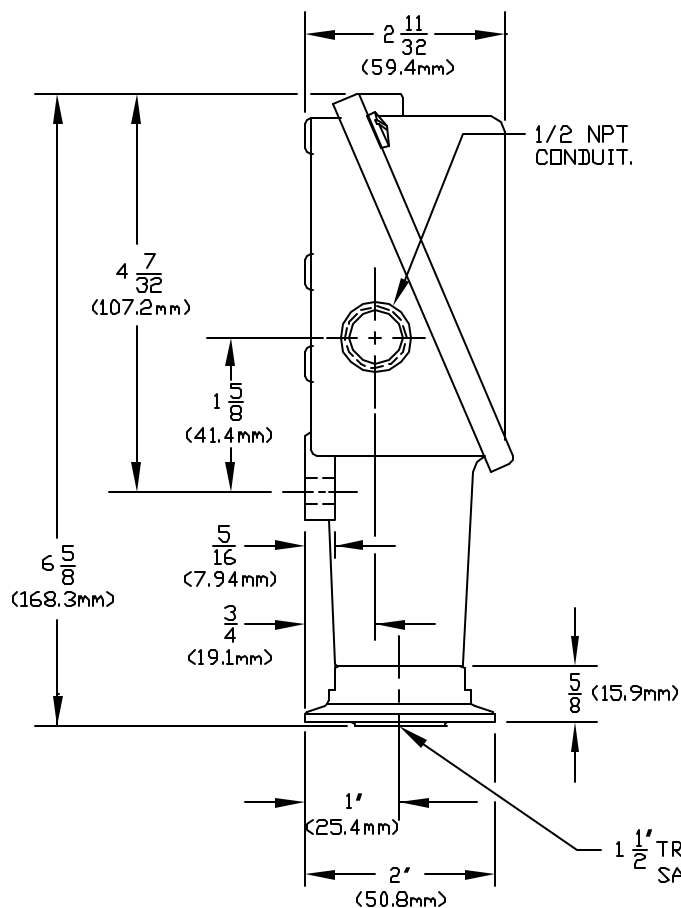


UL LISTED, CSA CERTIFIED.
CONFORMS TO NEMA 4X & IP65
REQUIREMENTS.

I & M SHEET IMP100.




567	15 TO 300	1.03 TO 20.68
566	10 TO 100	0.69 TO 6.90
565	5 TO 30	0.34 TO 2.07
MODEL NO.	PSI	BAR
	ADJUSTABLE RANGE	
	LOW END OF RANGE ON FALL	
	HIGH END OF RANGE ON RISE	

SYM	DESCRIPTION	DATE	DWN	APPD
C	ADDED 1" (25.4mm) & 5/16 (7.94mm) DIMENSIONS. ECN#C6B49	10-31-97	P.W.	A.M.
B	REV. COVER SCREW AND ADDED "D" RING ON "M" DWG. ECN#C4972	11-10-95	A.E.	J.S.M.
A	FIRST ISSUE. ECN#C4279	4-12-95	A.E.	L.K.
REVISIONS				

ORIGINAL DATE	3-7-95
DRWN	A. EBALD
CHKD	PETER WEILER
APPD	L.KHATCHADOURIAN
UNLESS OTHERWISE SPECIFIED DIMENSIONS ARE IN INCHES TOLERANCES ON FRACTIONS ±1/64	
2 PLACE DEC 3 PLACE DEC ANGLES ±.010 ±.005 ±1/2°	
DO NOT SCALE THIS DRAWING	

TITLE	H100
PROCESS	SCALE HALF

DF1



UNITED ELECTRIC
CONTROLS COMPANY
WATERTOWN * MASSACHUSETTS

DWG NO
A-12986