

# ATX™ DA2W2E102 Video Camera Housing

## Flameproof

**ATEX:**  
**Zone 1 and 2 - 21 and 22**  
**⊕ II 2 GD**  
**IP66 - IK09**

### Applications

- Flameproof housing to encase video camera used for onshore and offshore site and process supervision.

### Features

- Maximum dissipated power: 10 W.
- Equipped with a back plate.
- One open view glass window, usable Ø 84 mm (3.31").
- Two internal grounding connection: M4 screw. External grounding: M6 screw.
- Two M20 threaded entries at the bottom.

### Standard Materials

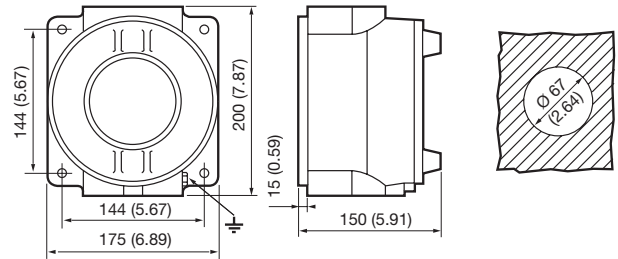
- Body: gray painted aluminium
- Window: sealed toughened glass

### ATEX Certifications and Compliances

- Certification Type BR2d
  - Gas: Zones 1 and 2
    - Conforming to ATEX 94/9/CE: ⊕ II 2 G
    - Type of Protection: Ex d IIC
    - Temperature Class: T6
  - Dust: Zone 21 and 22
    - Conforming to ATEX 94/9/CE: ⊕ II 2 D
    - Type of Protection: Ex tD A21
    - Surface Temperature: T80 °C (T176 °F)
- Ambient Temperature: -40 °C to +55 °C (-40 °F to +131 °F)
- CE Declaration of Conformity: 50256
- ATEX Certificate: LCIE 03 ATEX 6062
- Index of Protection according EN/IEC 60529: IP66
- Impact Resistance (shock): IK09
- Internal Volume: ≤ 2 dm<sup>3</sup> (122 in<sup>3</sup>) — 2 liters




Dimensions in Millimeters (Inches)



Weight kg (lb)	Volume dm <sup>3</sup> (in <sup>3</sup> )	Catalog Number
3.5 (7.72)	13 (0.00079)	DA2W2E102

### Accessories

Description	Catalog Number
 Adjustable Mount	VCBHBA

ENCLOSURES AND JUNCTION BOXES: ATEX FLAMEPROOF CAMERA HOUSING

Appleton®