

Enclosed Laboratory Filtration System BECO INTEGRA® LAB 220 P



Versatile, Sanitary Design Laboratory Depth Filtration System

BECO INTEGRA LAB 220 P depth filtration system from Eaton's Begerow Product Line is for small volume filtration tasks in laboratories and research centers. The areas of application include small batches and upscaling in biotechnology and pharmaceutical, chemical, and cosmetics industries.

BECO INTEGRA LAB 220 P's special design of two round, vertical filter elements on the left and right sides in the filter chamber, makes it possible to transfer the test results directly from the laboratory or research center to production scale equipment.



Special Features

- **Simple and clearly arranged design** with many connection, valve, and pressure measurement options.
- A wrap-around gasket ensures a **high level of safety** by preventing leakage to the surrounding atmosphere.
- Ergonomic design for **easy handling. Effortless** replacement of BECO® depth filter sheets; thorough and **easy cleaning**, no dead spaces.
- Combine multiple steps such as pre-filtration and sterilizing filtration into one filtration step, simply by installing two different BECO depth filter sheets. One, coarse and fine filtration, the other, powder and fine filtration.

Other models and enhancements with additional components for complete systems are possible according to requirements.

Technical Data

Max. permissible operating pressure:	58 psi (400 kPa/4 bar)
Max. permissible differential pressure:	43.5 psi (300 kPa/3 bar)
Max. permissible operating temperature:	284 °F (140 °C)

Filter

Depth filter sheet size:	8.74" (222 mm)
Filter surface:	0.33 ft² (0.031 m²)/ depth filter sheet
Number of depth filter sheets	
Single stage filtration:	1 or 2 sheets
Two stage filtrations:	1 x 2 or 2 x 2 sheets
Cake frame width:	1.58" (40 mm)
Max. cake volume:	0.33 gal (1.25 l)

Housing Material

Product contacting parts:	Stainless steel AISI 316L / AISI 316 Ti
Others:	Stainless steel AISI 304
Gaskets, O-rings:	EPDM, Silicone, Viton, FEP coated

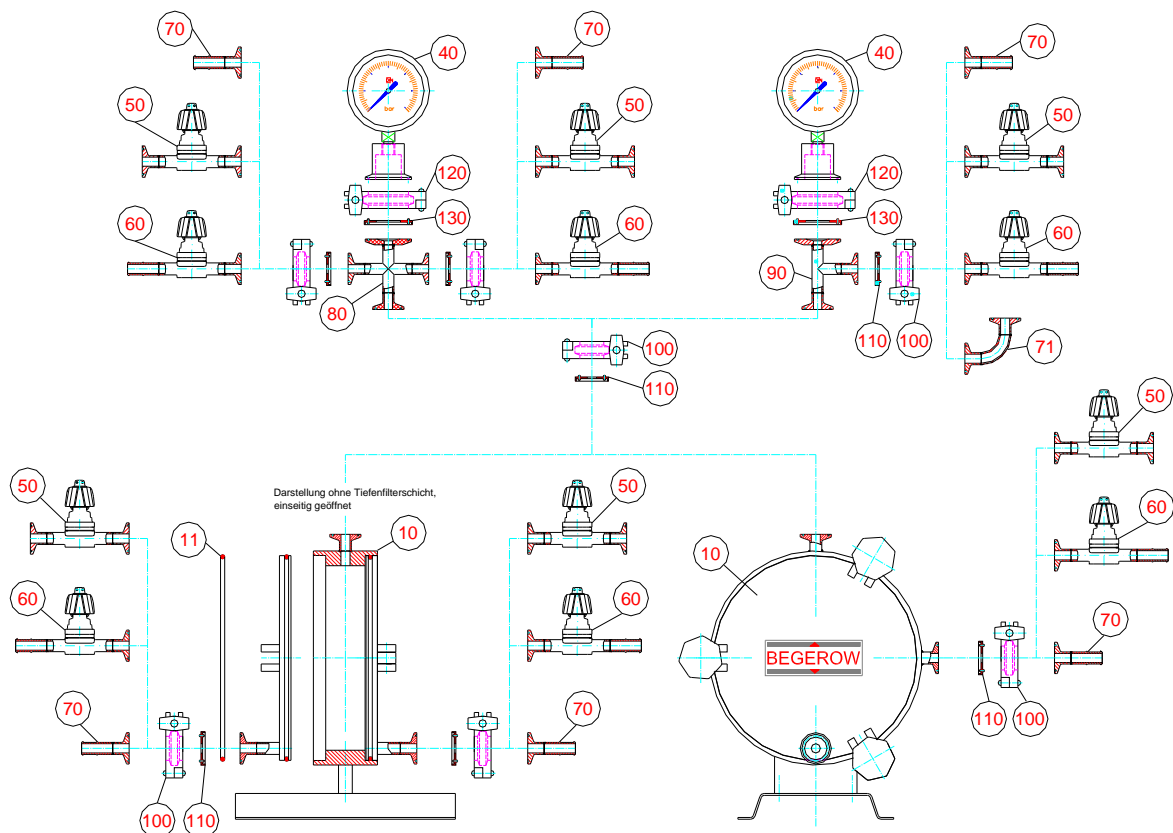
Connections

Filter inlet:	DN 8 ,Tri-Clamp, ISO 2852
Filter outlet:	DN 8 ,Tri-Clamp, ISO 2852

Pos.	Description	Article no.
10	BECO INTEGRA LAB 220 P (including Pos. 11(EPDM))	P7001001
40	Diaphragm pressure gauge 0 – 87 psi (0 – 600 kPa/0 – 6 bar), NG 63	P7400113
70	Adapter TC DN 8* - Hose clip**	P7500301
71	90° bend with mit 2 x TC DN 8*	P7500401
80	Cross piece, 3 x TC DN 8*, 1 x TC DN 25***	P7500101
90	T-piece 2 x TC DN 8*, 1 x TC DN 25***	P7500201
100	Tri-Clamp DN 8	P7510101
120	Tri-Clamp DN 25	P7510001
	Lever for round filter	P7800105
	Star knob 50 x M10 (knurled nut)	P7800101

Pos.	Description	EPDM	Silicone	Viton	FEP coated
11	O-ring BECO INTEGRA LAB 220 P	59262117	P7800302	59262118	P7800304
50	Diaphragm valve DN 8, 2 x TC DN 8*	P7400201	P7400202	P7400203	P7400204
60	Diaphragm valve DN 8, TC DN 8*/Hose clip**	P7400301	P7400302	P7400303	P7400304
110	Clamp gasket DN 8	P7510301	P7510302	P7510303	P7510304
130	Clamp gasket DN 25	P7510201	P7510202	P7510203	P7510204

* Tri-Clamp DN 8, ISO 2852 ** Hose clip DN 10 DIN 11854 *** Tri-Clamp DN 25, ISO 2852



North America - HQ

44 Apple Street,
Tinton Falls, NJ 07724
Toll Free: 800 656-3344
(North America Only)
Voice: +1 732 212-4700

Europe/Africa/Middle East

Auf der Heide 2
53947 Nettersheim, Germany
Voice: +49 2486 809-0

Internormen Product Line

Friedensstraße 41
68804 Altlussheim, Germany
Voice: +49 6205 2094-0

Begerow Product Line

An den Nahewiesen 24
55450 Langenlonsheim, Germany
Voice: +49 6704 204-0

Brazil

Av. Julia Gaioli, 474 - Bonsucesso
07251-500 - Guarulhos
Brazil
Voice: +55 11 2465 8822

China

No. 7 Lane 280 Linhong Road,
Changning District,
Shanghai 200335, China
Voice: +86 21 5200 0422

Singapore

4 Loyang Lane #04-01/02
Singapore 508914
Voice: +65 6825 1668

For more information, please e-mail us at filtration@eaton.com or visit us online at eaton.com/filtration for a complete list of Eaton's filtration products.

Not all products in Eaton's Begerow Product Line are available in all regions. Please contact your local Eaton office to determine availability.

© 2012 Eaton Corporation. All Rights Reserved. All trademarks and registered trademarks are the property of their respective owners.

All information and recommendations appearing in this brochure concerning the use of products described herein are based on tests believed to be reliable. However, it is the user's responsibility to determine the suitability for his own use of such products. Since the actual use by others is beyond our control, no guarantee, expressed or implied, is made by Eaton as to the effects of such use or the results to be obtained. Eaton assumes no liability arising out of the use by others of such products. Nor is the information herein to be construed as absolutely complete, since additional information may be necessary or desirable when particular or exceptional conditions or circumstances exist or because of applicable laws or government regulations.