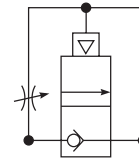


Soft Start Valve



Symbol



- Integral 3/4" or 1" ports
- Smooth start-up of pneumatic system
- Air pilot operation
- Adjustable slow start
- High flow

Options

S90		-	0			6		-	A		0	0	0
Series	Soft Start Valve S90		Thread type*	NPT 0 BSPP C		Port size	3/4 6 1 8		Function	A Air Pilot			

*Note: For 1-1/2" ported unit, please order P3YKA*BCP port block kit separately.
Bold items are most common.

Ordering information

Port size	Description	Flow scfm	Max. bar (psig)	Min temp °C (°F)	Max temp °C (°F)	Height mm (inches)	Width mm (inches)	Depth mm (inches)	Weight kg (lb)	Part number †
3/4"	Soft start valve	324	17.5 (253.8)	-10 (14)	60 (140)	85 (3.3)	90 (3.5)	97 (3.8)	.8 (1.8)	S90-06-A000
1"	Soft start valve	324	17.5 (253.8)	-10 (14)	60 (140)	85 (3.3)	90 (3.5)	97 (3.8)	.8 (1.8)	S90-08-A000

† Standard part numbers shown in bold. For other models refer to Options chart above.

Specifications

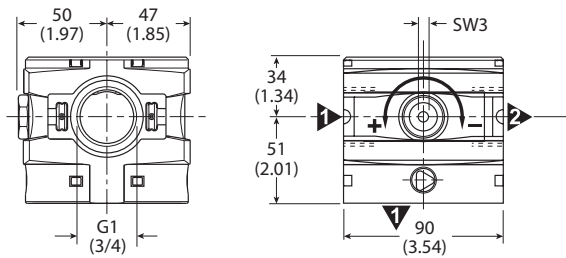
Fluid	Compressed air
Max. pressure air pilot operated	17.5 bar (254 psig)
Minimum operating pressure	2 bar (29 psig)
Temp. range* solenoid operated	-10°C to 60°C (14°F to 140°F)
Temp. range* air pilot operated	-10°C to 60°C (14°F to 140°F)

* Air supply must be dry enough to avoid ice formation at temperatures below 2°C (35.6°F)
 Snap pressure: Full flow when downstream pressure reaches 50% of the inlet pressure

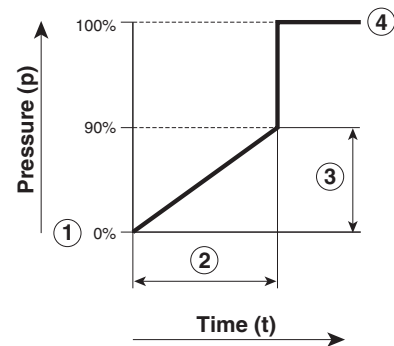
Material specifications

Body	Aluminum
Body cover	ABS
Valve	Brass / NBR composite
Pilot valve booster	Aluminum
Seals	Nitrile NBR

Dimensions mm (inches)



Flow characteristics



- ① Start signal
- ② Switching time delay
- ③ Gradual pressure build up
- ④ Operating pressure $p^2 (= p^1)$