

# Drain, Breather, Universal Drain or Breather

## Explosionproof, Dust-Ignitionproof

**NEC/CEC:**

- Class I, Division 1 and 2, Groups B♦, C, D
- Class II, Division 1 and 2, Groups E, F, G
- Class III

**Applications**

- To provide a means for the prevention and/or release of condensation when properly installed in the appropriate location.

**Features**

- Accurately tapped, tapered threads for tight, rigid joints and ground continuity.

**Standard Materials**

- Hazardous location combination drain/breathers: stainless steel
- Non-hazardous CRN drains: copperfree (4/10 of 1% max.) aluminum

**Standard Finishes**

- Stainless steel: natural finish
- Aluminum: natural finish

**Options**

- CRN: steel/zinc electroplate add suffix **-S**.

**NEC/CEC Certifications and Compliances**

- UL Standard: 886 (1203)
- UL Listed: E34997
- CSA Standard: C22.2 No. 30
- CSA Certified: 065181



ECD50B4X



ECDB38

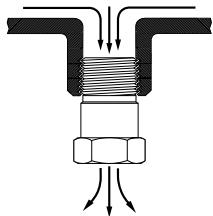


CRN38

**Illustrated Features**

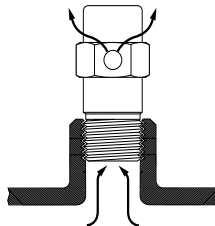
**Drain Fittings:**

Generally installed at bottom of enclosure housing to drain moisture caused by condensation.



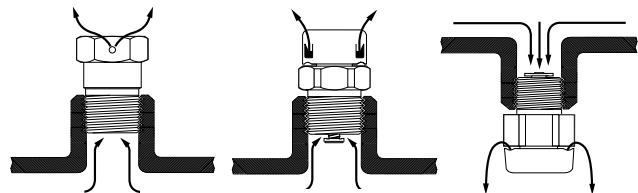
**Breather Fittings:**

Generally installed at top of enclosure housing to minimize condensation.



**Universal Drain-Breather Fittings:**

Generally installed at top and/or bottom of enclosure housing. The features of a drain fitting and a breather fitting are combined into one fitting.









♦ Items in the shaded area on the following page are UL Listed for Class I, Groups B, C, D; Class II, Groups E, F, G; Class III.

# Drain, Breather, Universal Drain or Breather

## Explosionproof, Dust-Ignitionproof

**NEC/CEC:**

Class I, Division 1 and 2, Groups B ◆, C, D  
 Class II, Division 1 and 2, Groups E, F, G  
 Class III

		Type	Trade Size (Inches)	Catalog Number
		<b>NEMA 3R Universal Drain or Breather</b> For high performance water drainage or continuous ventilation.	1/2	<b>ECDB50HP</b>
		<b>NEMA 4X Breather</b> For continuous ventilation.	1/2	<b>BRTB4X ◆</b>
		<b>NEMA 4X Drain</b> For automatic water drainage.	1/2	<b>ECD50B4X ◆</b>
		<b>NEMA 3R Group B Universal Drain or Breather</b> Raintight. For automatic water drainage or continuous ventilation.	3/8 1/2	<b>ECDB38B ◆</b> <b>ECDB50B ◆</b>
		<b>Groups C and D Universal Drain or Breather</b> For automatic water drainage or continuous ventilation.	3/8	<b>ECDB38</b>
		<b>Non-Hazardous Location Drain ①</b>	3/8 1/2 3/4	<b>CRN38</b> <b>CRN50</b> <b>CRN75</b>

① Also suitable for Class I, Division 2. Not UL Listed.

◆ Indicates items in the shaded area which are UL Listed for Class I, Groups B, C, D; Class II, Groups E, F, G; Class III.