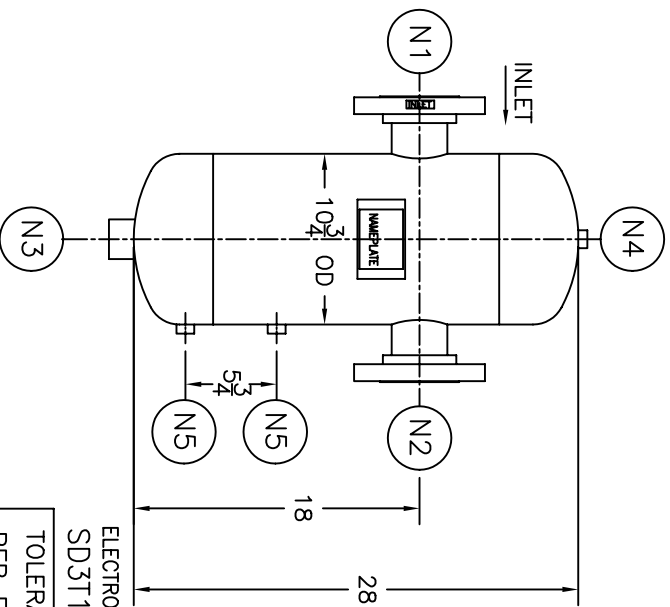
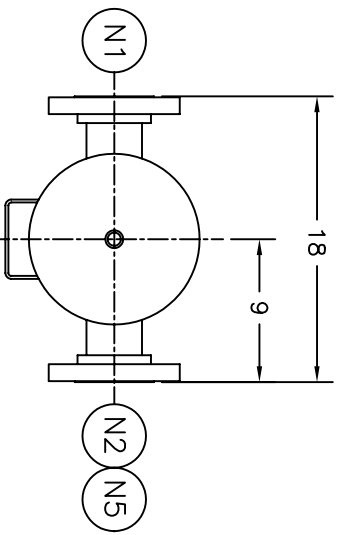


NOZZLE SCHEDULE			
ITEM	QTY.	NAME	DESCRIPTION
N1	1	INLET	3" 150# RF SO ASME B16.5
N2	1	OUTLET	3" 150# RF SO ASME B16.5
N3	1	DRAIN	1-1/2" 3000# NPT COUPLING
N4	1	VENT	1/2" NPT 3000# COUPLING
N5	2	LIQUID LEVEL	1/2" NPT 3000# COUPLING



REV	DATE	CHANGE	ECR	BY	APP
A	5/27/05	NEW ISSUE	D182	LH	VA
B	11/1/05	REVISED TITLE BLOCK	D507	FM	LH

NOTES:

1. UNITS ARE TO BE DESIGNED, FABRICATED & "U" OR "UM" STAMPED IN ACCORDANCE WITH ASME BOILER & PRESSURE VESSEL CODE, SECTION VIII, DIVISION 1 IN COMPLIANCE TO CURRENT PUBLISHED ADDENDA.
2. ALL DIMENSIONS ARE IN INCHES.
3. ALL BOLT HOLES ARE TO STRADDLE NATURAL CENTERLINES.
4. SHIPPING WEIGHT: 140 POUNDS.
5. DESIGN DATA:  
 DESIGN PRESSURE- 150 PSIG  
 DESIGN TEMPERATURE- 450° F  
 MIN. DESIGN METAL TEMP.- -20° F @ 150 PSIG  
 HYDROTEST PRESSURE- 195 PSIG  
 CORROSION ALLOWANCE- 0 INCHES
6. MATERIAL: CARBON STEEL


**STANDARD**

CUSTOMER:  
 REG. NO.:  
 P.O. NO.:  
 TAG NO.:  
 PART NO.: 3T150C, 3T150CU, & 3T150CM

ELECTRONIC FILE NAME:  
 SD3T150C.DWG

TOLERANCES UNLESS OTHERWISE SPECIFIED  
 PER ENGINEERING STANDARD ES- --

UNAUTHORIZED USE, MANUFACTURE OR  
 REPRODUCTION IN WHOLE OR IN PART IS  
 PROHIBITED. DRAWING, DESIGN AND  
 OTHER DISCLOSURES PROPERTY OF  
 EATON FILTRATION, LLC

		<b>EATON FILTRATION, LLC</b> 900 FAIRMOUNT AVENUE, ELIZABETH, NEW JERSEY 07207					
		NAME <b>3" TYPE "T" GAS/LIQUID SEP.            150# RF FLG. CSTL</b>					
DRAWN	LH	DATE	05/27/05	CHECKED	FM	DATE	05/27/05
APP	VA	DATE	05/27/05	SCALE	NTS	ECR	D182
SIZE	DWG	NO		SD3T150C		REV	B