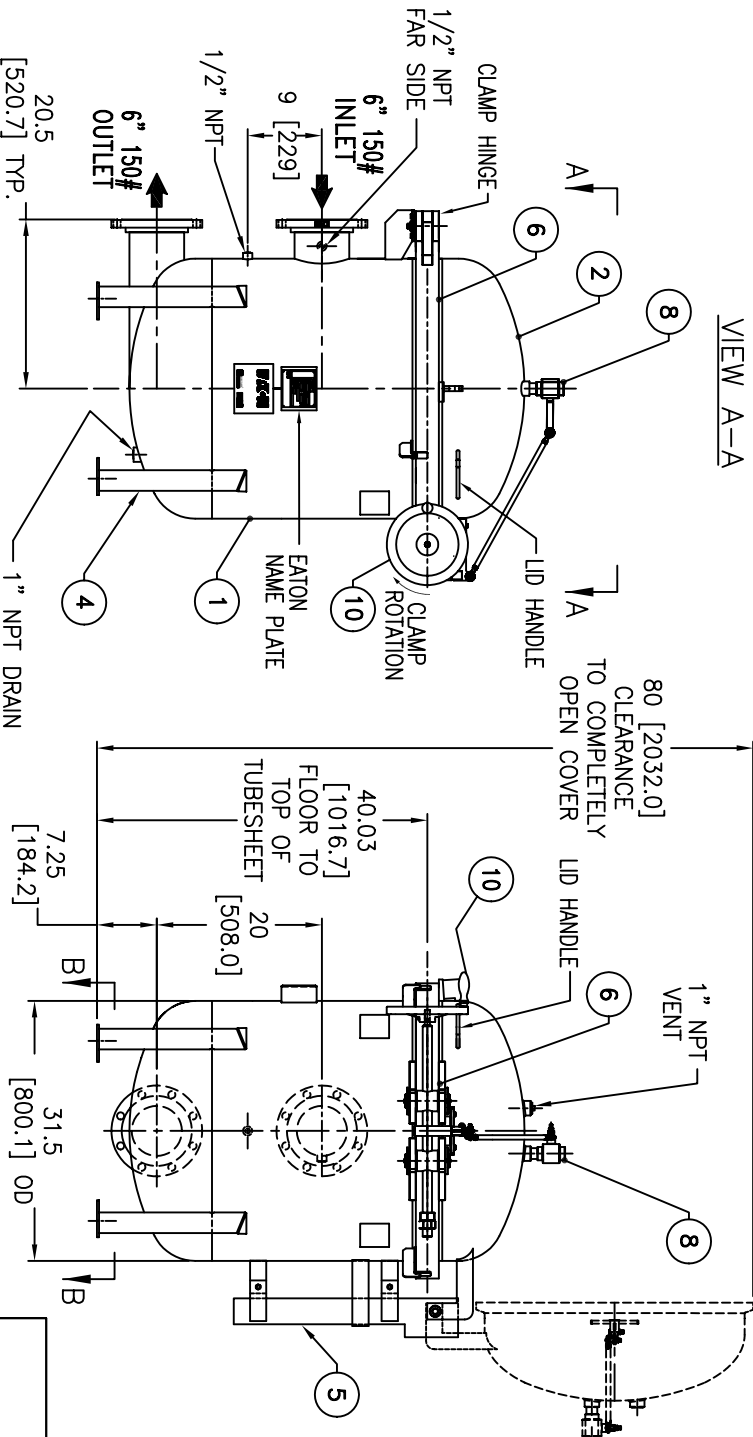


(4) .75 [19.0] Ø BOLT HOLES
LOCATED ON 30.71 [780.0] B.C.D.

ITEM	PART NAME	MATERIAL
1	BODY	SA240-304/304L
2	COVER	SA240-304/304L
3	O-RING	BUNA-N
4	LEGS	STAINLESS STEEL
5	SPRING ASSISTED MECHANISM	STAINLESS STEEL
6	CLAMP ASSEMBLY	STAINLESS STEEL
7	FILTER BAG HOLD DOWN	304 SS
8	1" VENT VALVE ASSY.	304 SS
9	SPINDLE BOLT	SA193-87 NEDOX COATED
10	SPINDLE HANDLE	ALUMINUM (BLACK COATED)

NOTES:

1. UNITS ARE DESIGNED, FABRICATED & U STAMPED IN ACCORDANCE WITH ASME SECT. VIII, DIV. 1 BOILER & PRESSURE VESSEL CODE, IN COMPLIANCE TO LATEST ADDENDA.
2. INLET/OUTLET FLANGE CONNECTIONS PER ANSI B16.5 (10.3 BAR @ 121.1°C)
3. DESIGN PRESSURE: 150 PSIG @ 250°F
4. ALL DIMENSIONS ARE IN INCHES / [mm]
5. ALL BOLT HOLES STRADDLE NATURAL CENTERLINE.
6. APPROX. WEIGHT (DRY): 920 lbs. (417 kgs.)
7. APPROX. SHIPPING WEIGHT 1050 lbs. (476 kgs.)



ELECTRONIC FILE NAME: SE0606TSL304.DWG
REF. ECR E023
DATE 06/20/06

UNAUTHORIZED USE, MANUFACTURE OR REPRODUCTION IN WHOLE OR IN PART IS PROHIBITED. DRAWING, DESIGN AND OTHER DISCLOSURES PROPERTY OF EATON FILTRATION, LLC

		DATE	06/20/06	CERT.	LH	DATE	06/20/06
		NAME	EATON FILTRATION, LLC 900 FAIRMOUNT AVENUE, ELIZABETH, NEW JERSEY 07207				
SIZE	DWG NO.	6" MBF-0602 FILTER VESSEL 6"-150# INLET/TANGENTIAL OUTLET SPINDLE TYPE-SE (SS-304)					
DRAWN	FJM	DATE	06/20/06	CERT.	LH	DATE	06/20/06
A		SE0606TSL304					
A		REV					

CERTIFIED FOR:
P.O. NO.:
REG. NO.:
QUOTE NO.:
TAG NO.:
VESSEL CODE: V-MBF-0602-BB10-060A-UT-11SE-100P
PART NUMBER: F3AV0600200L304