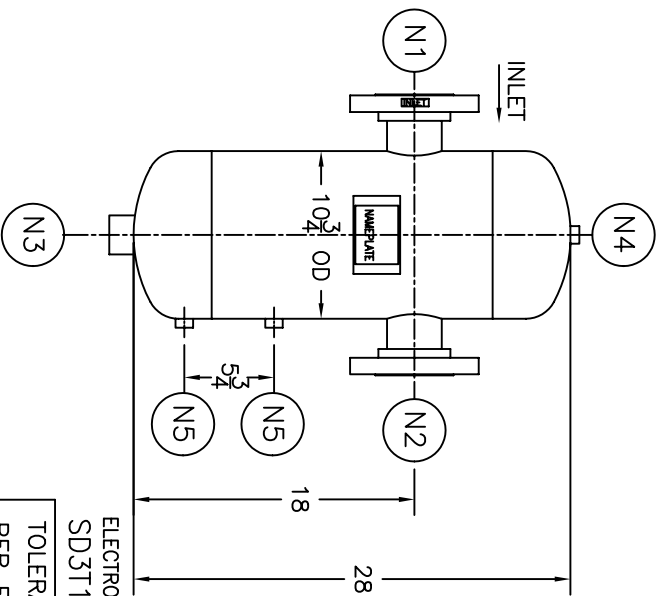
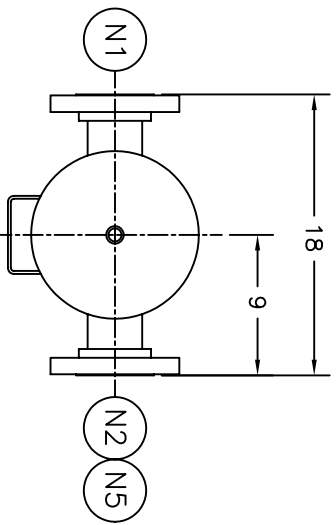


NOZZLE SCHEDULE			
ITEM	QTY.	NAME	DESCRIPTION
N1	1	INLET	3" 150# RFSO ASME B16.5
N2	1	OUTLET	3" 150# RFSO ASME B16.5
N3	1	DRAIN	1-1/2" 3000# NPT COUPLING
N4	1	VENT	1/2" NPT 3000# COUPLING
N5	2	LIQUID LEVEL	1/2" NPT 3000# COUPLING



REV	DATE	CHANGE	ECR	BY	APP
A	7/12/01	NEW ISSUE	9612	GC	FJM
B	11/1/05	REVISED TITLE BLOCK	D507	FM	LH

NOTES:

1. UNITS ARE TO BE DESIGNED, FABRICATED & "U" OR "UM" STAMPED IN ACCORDANCE WITH ASME BOILER & PRESSURE VESSEL CODE, SECTION VIII, DIVISION 1 IN COMPLIANCE TO CURRENT PUBLISHED ADDENDA.
2. ALL DIMENSIONS ARE IN INCHES.
3. ALL BOLT HOLES ARE TO STRADDLE NATURAL CENTERLINES.
4. SHIPPING WEIGHT: 100 POUNDS.
5. DESIGN DATA:
 DESIGN PRESSURE- 150 PSIG
 DESIGN TEMPERATURE- 300° F
 MIN. DESIGN METAL TEMP.- -20° F @ 150 PSIG
 HYDROTEST PRESSURE- 195 PSIG
 CORROSION ALLOWANCE- 0 INCHES
6. MATERIAL: 304/304L STAINLESS STEEL

STANDARD

CUSTOMER:
 REG. NO.:
 P.O. NO.:
 TAG NO.:
 PART NO.: 3T1150S, 3T1150SU, & 3T1150SM

ELECTRONIC FILE NAME:
 SD3T150S.DWG

TOLERANCES UNLESS OTHERWISE SPECIFIED
 PER ENGINEERING STANDARD ES- ---

UNAUTHORIZED USE, MANUFACTURE OR
 REPRODUCTION IN WHOLE OR IN PART IS
 PROHIBITED. DRAWING, DESIGN AND
 OTHER DISCLOSURES PROPERTY OF
 EATON FILTRATION, LLC



EATON FILTRATION, LLC
 900 FAIRMOUNT AVENUE, ELIZABETH, NEW JERSEY 07207
 NAME
 3" TYPE "T" GAS/LIQUID SEP.
 150# RF FLG. SSTL

DRAWN	GC	DATE	7/12/01	CHECKED	FJM	DATE	7/12/01
APP	VH	DATE	7/12/01	SCALE	NTS	ECR	9612
SIZE	A	DWG	NO	SD3T150S		REV	B