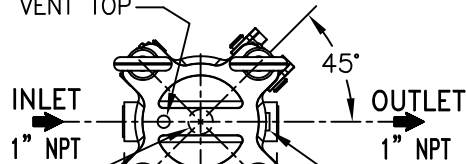


ITEM NUMBER	BAG SIZE	PIPE SIZE (NOM.)	A IN. / MM	B IN. / MM	C IN. / MM	D IN. / MM	E IN. / MM	F IN. / MM	G IN. / MM	H IN. / MM	WEIGHT LBS / KGS
F3AVSB1018	04	1" / [25.4]	20-5/8 / 523.8	4-1/2 / 114.3	17-11/16 / 449.2	3-1/4 / 82.5	34-1/2 / 876.3	24 / 609.6	12-13/16 / 325.4	6 / 152.4	26 / 11.8

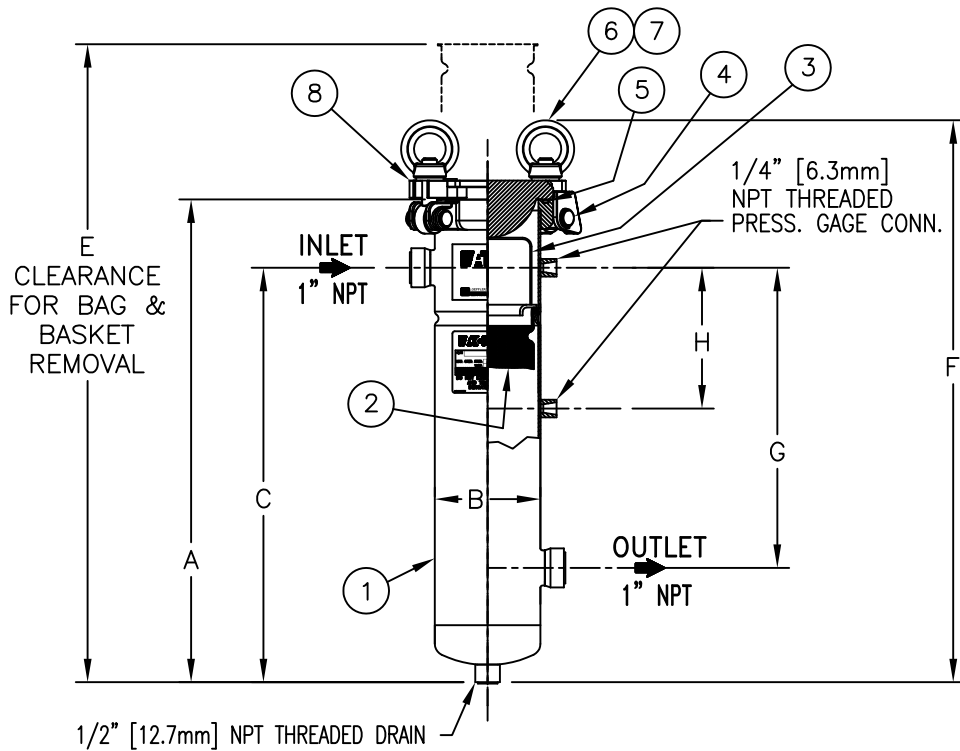
1/4" [6.3mm]  
NPT VENT TOP



1/2" [12.7mm] NPT  
THREADED DRAIN (BOTTOM)

1/4" [6.3mm] NPT THREADED  
PRESS. GAGE CONN.  
TYP. 2-PLACES

D D



E  
CLEARANCE  
FOR BAG &  
BASKET  
REMOVAL

1/4" [6.3mm]  
NPT THREADED  
PRESS. GAGE CONN.

A

C

INLET  
1" NPT

OUTLET  
1" NPT

H

G

F

1/2" [12.7mm] NPT THREADED DRAIN

### REVISIONS

REV	DESCRIPTION	BY	ECO	DATE
B	REVISED BORDER	FJM	0073817	07/19/12

NO.	PART NAME	MATERIAL
1	BODY	316 STAINLESS STEEL
2	RESTRAINER BASKET P/N L0001224 04 SIZE	316 STAINLESS STEEL
3	BAG HOLD DOWN	316 STAINLESS STEEL
4	PIN	STAINLESS STEEL
5	O-RING P/N 811351	BUNA-N
6	EYE BOLT	STEEL, ZINC PLATED
7	EYE NUT	STEEL, ZINC PLATED
8	COVER	316 STAINLESS STEEL

### NOTES:

- INLET/OUTLET "NPT" THREADED CONNECTIONS PER ANSI B1.20.1.
- MAWP: 300 PSI @ 225 °F  
(20.6 BAR @ 107.2 °C)
- DIMENSIONS SHOWN IN [ ] ARE IN MILLIMETERS AND FOR REFERENCE ONLY. ACCEPTANCE OF THIS PART WILL BE BASED ON "INCH" UNITS & TOLERANCES ONLY.

### TOLERANCES (UNLESS OTHERWISE SPECIFIED)

DECIMAL:	.X ± .030
	.XX ± .010
	.XXX ± .005
FRACTIONAL:	± 1/16
NOZZLE Ø TO FLOOR:	1/8" < 4" > ± 1/4"
FACE TO FACE:	1/8" < 4" > ± 1/4"
ANGULAR:	± 1°
FLANGES (H/V):	± 1/2°
VESSEL OVERALL HT:	± 1"


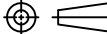
REVIEWED FOR CLASSIFICATION PER PR-4

CRITICAL SIGNIFICANT

### CUSTOMER INFO

NAME	
P.O. NO.	
S.O. NO.	
QUANTITY	
PART NO.	F3AVSB1018

PART NUMBER: F3AVSB1018 VESSEL CODE: SBF-0104-AB21-010N-NI-B-PNS

DRAWN BY FJM	 <b>EATON</b> EATON FILTRATION, LLC DESIGN CENTER ISELIN, NEW JERSEY, USA • PORTAGE, MICHIGAN, USA			
SCALE AS DRAWN				
RESTRICTION RESTRICTED	TITLE MINI SIDELINE (SBF-0104) FILTER VESSEL 1" NPT THREADED CONN. STAINLESS STEEL			
SHEET 1 OF 1				
PROJECTION THIRD ANGLE 	DATE 04/30/02	SIZE A	DWG FILENAME SDI-07552	REV B

EATON CORPORATION - CONFIDENTIAL AND PROPRIETARY NOTICE TO PERSONS RECEIVING THIS DRAWING AND/OR TECHNICAL INFORMATION  
THIS DOCUMENT, INCLUDING THE DRAWING AND INFORMATION CONTAINED THEREON IS CONFIDENTIAL AND IS THE EXCLUSIVE PROPERTY OF EATON AT ANY TIME. BY TAKING THE  
POSSESSION OF THIS DOCUMENT THE RECIPIENT ACKNOWLEDGES AND AGREES THAT THIS DOCUMENT CANNOT BE USED IN ANY MANNER ADVERSE TO THE INTEREST OF EATON AND  
THAT NO PORTION OF THIS DRAWING MAY BE COPIED OR OTHERWISE REPRODUCED WITHOUT THE PRIOR WRITTEN CONSENT OF EATON, IN THE CASE OF CONFLICT CONTRACTUAL  
PROVISIONS, THIS NOTICE SHALL GOVERN THE STATUS OF THIS DOCUMENT.  
2012 EATON CORPORATION - ALL RIGHTS RESERVED.