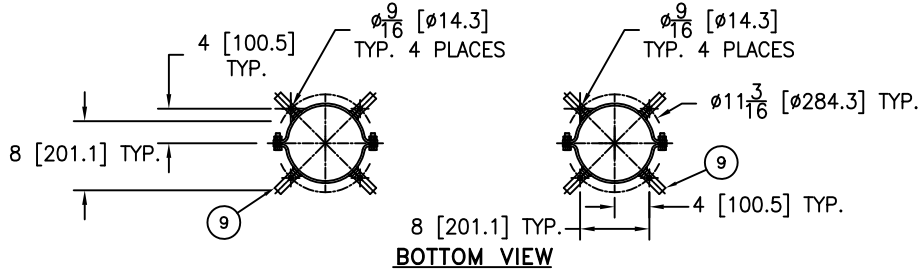


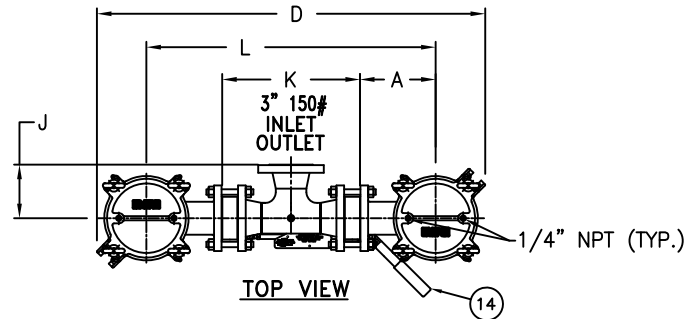
ITEM NUMBER	BAG SIZE	IN. / MM	IN. / MM	IN. / MM	IN. / MM	IN. / MM	IN. / MM	IN. / MM	IN. / MM	IN. / MM	IN. / MM	IN. / MM	WEIGHT LBS / KGS
F3AVSB00322	O2	8-11/16 / 220.6	34-3/4 / 882.6	41-13/16 / 1062	44-3/8 / 1127.1	69 / 1752.6	19-1/4 / 488.9	8-5/8 / 219	27 / 685.8	6-1/8 / 155.5	15-3/4 / 400	33-1/8 / 841.3	370 / 167.8

REVISIONS

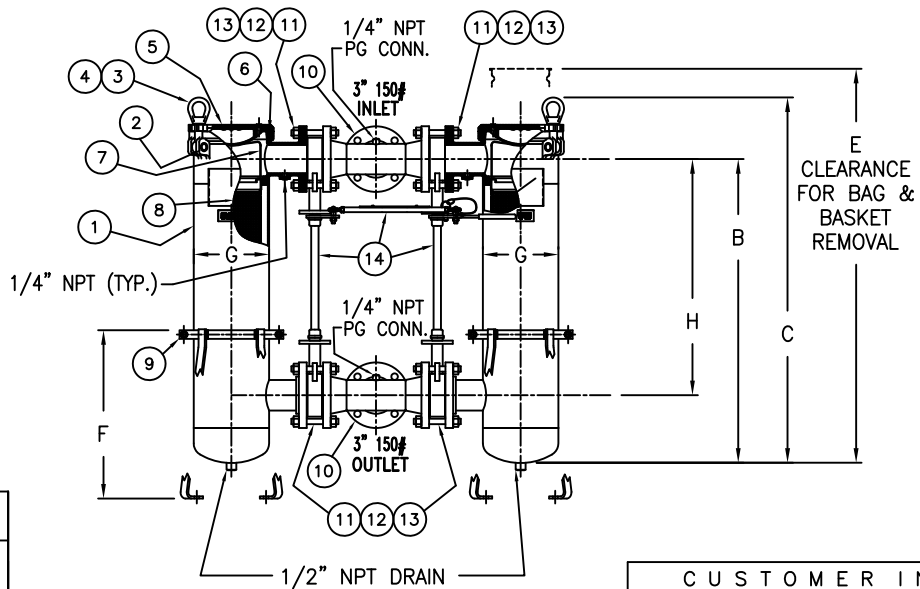
REV	DESCRIPTION	BY	ECO	DATE
D	UPDATE DRAWING	FJM	0087416	07/19/13



BOTTOM VIEW



TOP VIEW



NO.	PART NAME	MATERIAL
1	BODY	SA-351 CF8M SA-312 TP 316 SA-403 TP 316
2	PIN	SA-193 GR B7, ZINC PL
3	EYE BOLT	SA-193 GR B7, ZINC PL
4	EYE NUT	SA-194 GR 2H, ZINC PL
5	COVER	SA-351 CF8M
6	O-RINGS P/N L0000024	BUNA-N
7	BAG HOLD DOWN	316 STAINLESS STEEL
8	RESTRAINER BASKET P/N L0001753	316 STAINLESS STEEL
9	ADJUSTABLE LEGS	CSTL EPOXY COATED
10	INLET/OUTLET MANIFOLDS	316 STAINLESS STEEL
11	MANIFOLD BOLTING	SA-193 GR B7, ZINC PL
12	MANIFOLD NUTS	SA-194 GR 2H, ZINC PL
13	BUTTERFLY VALVE 3" 150# WAFER STYLE NO HANDLE	CAST OR DUCTILE IRON BODY SSTL DISC & SHAFT BUNA-N SEAT
14	VALVE LINKAGE W/HANDLE	304 STAINLESS STEEL

NOTES:

- UNITS ARE TO BE DESIGNED, FABRICATED & "UM" STAMPED IN ACCORDANCE WITH ASME SECT. VIII, DIV. 1 BOILER & PRESSURE VESSEL CODE, IN COMPLIANCE TO LATEST ADDENDA.
- INLET/OUTLET FLANGED CONNECTIONS PER ANSI B16.5.
- MAWP: MDMT:
150 PSI @ 250° F -20° F @ 150 PSI
(10.3 BAR @ 121.1° C) (-28.9° C @ 10.3 BAR)
- MAXIMUM OPERATING TEMP. 400° F (204.4° C) WITH VITON O-RING & VITON BUTTERFLY VALVE SEATS.
- DIMENSIONS SHOWN IN [] ARE IN MILLIMETERS AND FOR REFERENCE ONLY. ACCEPTANCE OF THIS PART WILL BE BASED ON "INCH" UNITS & TOLERANCES ONLY.

TOLERANCES (UNLESS OTHERWISE SPECIFIED)

DECIMAL:	.X ± .030
	.XX ± .010
	.XXX ± .005
FRACTIONAL:	± 1/16
NOZZLE Ø TO FLOOR:	1/8" < 4' > 1/4"
FACE TO FACE:	1/8" < 4' > 1/4"
ANGULAR:	± 1°
FLANGES (H/V):	± 1/2°
VESSEL OVERALL HT:	± 1"

BOLT HOLES MUST STRADDLE Ø MACHINED PARTS TO BE FREE OF BURRS FOR ADDITIONAL TOLERANCE DETAILS REF. ES-211, ES-222 AND ES-223

REVIEWED FOR CLASSIFICATION PER PR-4
 CRITICAL SIGNIFICANT

CUSTOMER INFO	
NAME	
P.O. NO.	
S.O. NO.	
QUANTITY	
PART NO.	F3AVSB00322

DRAWN BY		VESEL CODE: DSBF-0102-AB10-030A-LINK	
SCALE		EATON FILTRATION, LLC DESIGN CENTER TINTON FALLS, NEW JERSEY, USA PORTAGE, MICHIGAN, USA	
RESTRICTION		TITLE	
AS DRAWN		SIDELINE (DSBF-0102) DUPLEX BAG FILTER 3"-150#RF FLANGED CONNECTION SSTL W/ BUTTERFLY VALVE LINKED, MANIFOLDS, & BUNA O-RING	
SHEET		DATE	
1 OF 1		12/12/03	
PROJECTION		SIZE	
THIRD ANGLE		A	
		DWG FILENAME	
		DSBF02XS-3KL	
		REV	
		D	

EATON CORPORATION - CONFIDENTIAL AND PROPRIETARY NOTICE TO PERSONS RECEIVING THIS DRAWING AND/OR TECHNICAL INFORMATION
THIS DOCUMENT, INCLUDING THE DRAWING AND INFORMATION CONTAINED THEREON IS CONFIDENTIAL AND IS THE EXCLUSIVE PROPERTY OF EATON. BY TAKING THE POSSESSION OF THIS DOCUMENT THE RECIPIENT ACKNOWLEDGES AND AGREES THAT THIS DOCUMENT CANNOT BE USED IN ANY MANNER ADVERSE TO THE INTEREST OF EATON AND THAT NO PORTION OF THIS DRAWING MAY BE COPIED OR OTHERWISE REPRODUCED WITHOUT THE PRIOR WRITTEN CONSENT OF EATON. IN THE CASE OF CONFLICT OF CONTRACTUAL PROVISIONS, THIS NOTICE SHALL GOVERN THE STATUS OF THIS DOCUMENT.
2013 EATON CORPORATION - ALL RIGHTS RESERVED.