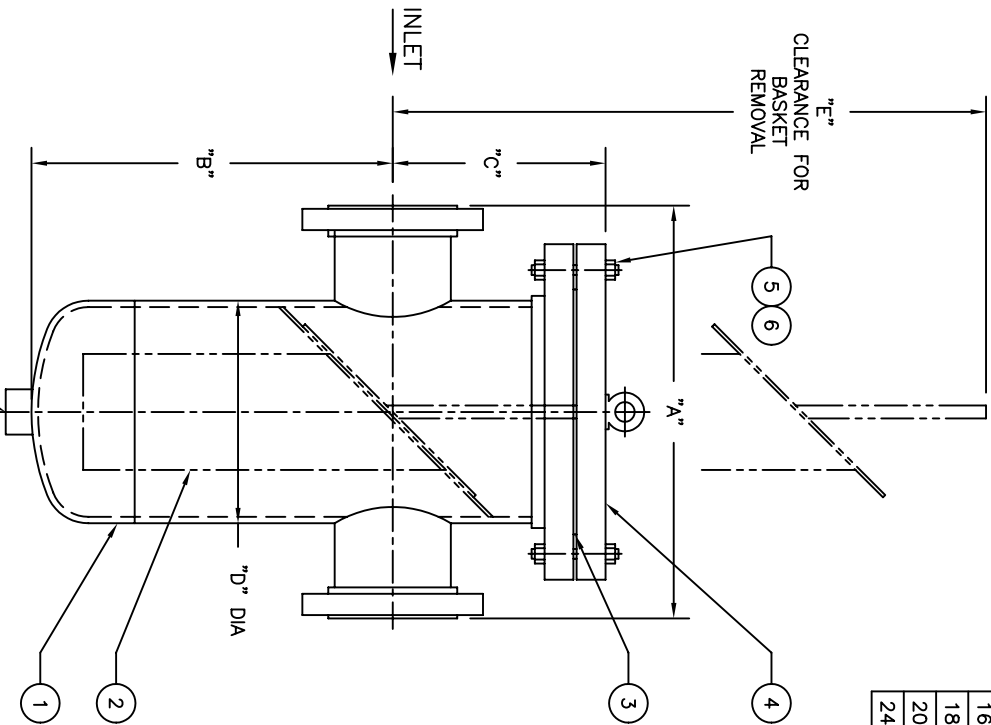


NO.	PART NAME	MATERIAL
1	BODY	STAINLESS STEEL
2	BASKET	
	PERF. DIA.	
	MESH	
3	GASKET	NON-ASBESTOS
4	COVER	STAINLESS STEEL
5	STUDS	SA 193 B7
6	NUTS	SA 194 2H



PIPE SIZE (NOMINAL)	DIMENSIONS						APPROX. WEIGHT LBS. KG	PART NO.
	A IN. MM	B IN. MM	C IN. MM	D IN. MM	E IN. MM	F (NOM.) IN. MM		
2 (50mm)	14.00 / 356	12.00 / 305	7.00 / 178	6.63 / 168	23.00 / 584	1/2 (15)	95 / 43.1	ST090020BR2BA
3 (80mm)	15.00 / 381	12.50 / 318	8.00 / 203	6.63 / 168	24.00 / 610	1/2 (15)	103 / 46.7	ST090030BR2BA
4 (100mm)	16.00 / 406	14.00 / 356	8.25 / 210	8.63 / 219	28.00 / 711	1 (25)	170 / 77.1	ST090040BR2BA
5 (125mm)	16.00 / 406	15.00 / 381	9.50 / 241	10.75 / 273	32.00 / 813	1 (25)	230 / 104.3	ST090050BR2BA
6 (150mm)	20.00 / 508	17.00 / 432	9.50 / 241	10.75 / 273	34.00 / 864	1 (25)	240 / 108.9	ST090060BR2BA
8 (200mm)	22.00 / 559	21.00 / 533	11.00 / 279	12.75 / 324	41.00 / 1041	1-1/2 (40)	340 / 154.2	ST090080BR2BA
10 (250mm)	32.00 / 813	25.00 / 635	13.00 / 330	16.00 / 406	47.50 / 1207	1-1/2 (40)	600 / 272.2	ST090100BR2BA
12 (300mm)	35.00 / 889	28.00 / 711	14.50 / 368	18.00 / 457	53.00 / 1346	1-1/2 (40)	770 / 349.3	ST090120BR2BA
14 (350mm)	37.00 / 940	33.00 / 838	15.75 / 400	20.00 / 508	61.00 / 1549	2 (50)	970 / 440.0	ST090140BR2BA
16 (400mm)	42.00 / 1067	36.00 / 914	18.25 / 464	24.00 / 610	68.00 / 1727	2 (50)	1360 / 616.9	ST090160BR2BA
18 (450mm)	42.00 / 1067	39.00 / 991	18.25 / 464	24.00 / 610	70.00 / 1778	2 (50)	1400 / 635.0	ST090180BR2BA
20 (500mm)	43.00 / 1092	44.00 / 1118	21.75 / 553	30.00 / 762	82.00 / 2083	2 (50)	1920 / 870.9	ST090200BR2BA
24 (600mm)	48.00 / 1219	60.00 / 1524	21.75 / 553	30.00 / 762	96.00 / 2438	2 (50)	2200 / 997.9	ST090240BR2BA

NOTES :
 1. UNITS ARE DESIGNED IN ACCORDANCE WITH ASME SECT. VIII, DIV. I OF BOILER PRESSURE VESSEL. CODE & IN COMPLIANCE TO CURRENT PUBLISHED ADDENDA .
 2. CODE STAMPED VESSEL AVAILABLE.
 3. ALL DIMENSIONS ARE IN INCHES / MM.
 4. INLET / OUTLET FLANGES PER ANSI B16.5.
 5. ALL BOLT HOLES STRADDLE NATURAL CENTERLINES.
 6. DESIGN PRESSURE : 150 PSIG @ 150° F (10.3 BAR @ 65.6°C)
 MDMT : -20°F @ 150 PSIG (MDMT : -28.9°C @ 10.3 BAR)

CERTIFIED FOR:
 P.O. NO.:
 REG. NO.:
 QUOTE NO.:
 TAG NO.:

EATON

EATON FILTRATION, LLC
 900 FAIRMOUNT AVENUE, ELIZABETH, NEW JERSEY 07207

MODEL 90 BASKET STRAINER
 150# RF FLANGE / BOLTED COVER
 SIZES 2" THRU 24" STAINLESS STEEL

NAME: SD090BC2
 DATE: 1/5/98
 CERT. LF
 DATE: 1/5/98

SIZE: A
 DWG NO: FM
 REV: D

ELECTRONIC FILE NAME: SD090BC2.DWG
 REF. ECR D507
 DATE 11/1/05

UNAUTHORIZED USE, MANUFACTURE OR REPRODUCTION IN WHOLE OR IN PART IS PROHIBITED. DRAWING, DESIGN AND OTHER DISCLOSURES PROPERTY OF EATON FILTRATION, LLC