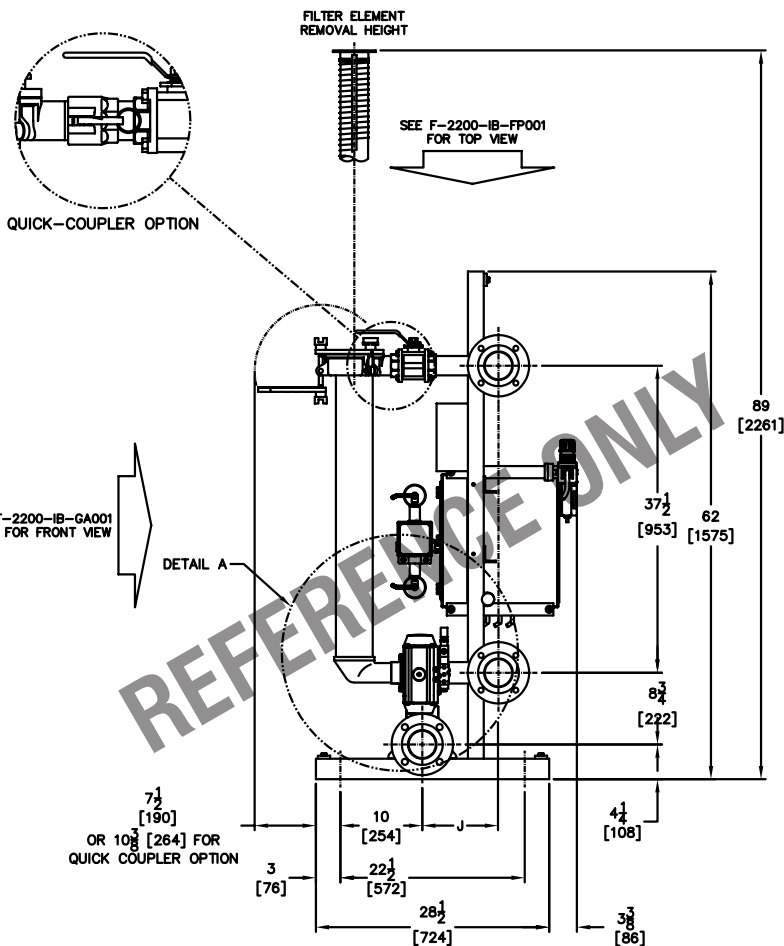
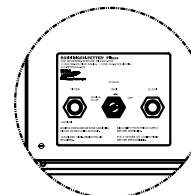


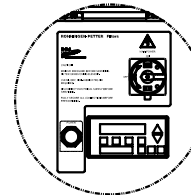
THIRD ANGLE PROJECTION



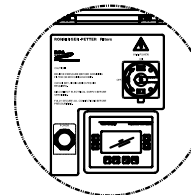
FOR DIMENSION TABLES SEE F-2200-IB-D1001



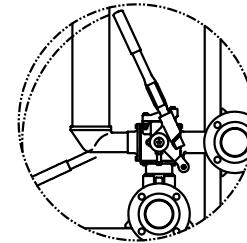
SEMI-AUTO CONTROL PANEL COVER



SIEMENS CONTROL PANEL COVER



ALLEN-BRADLEY CONTROL PANEL COVER



DETAIL A

NOTES:

1. ALL FLANGED PROCESS CONNECTIONS ARE LAP JOINT TYPE, ZINC PLATED CARBON STEEL.
2. PROCESS FLANGE CONNECTIONS ARE DRILLED TO ANSI, CLASS 150 OR DIN ND16.
3. HEADERS MAY BE PIPED AT EITHER END; BLIND FLANGES (PURCHASER SUPPLIED) REQUIRED FOR OPPOSITE END.
4. ALL METALLIC WETTED PARTS ARE 316 STAINLESS STEEL.
5. ALL DIMENSIONS ARE IN INCHES WITH METRIC EQUIVALENTS IN BRACKETS []
6. FILTER ELEMENTS ARE DESIGNED TO WITHSTAND 150 PSI [10.3 BAR] DIFFERENTIAL PRESSURE.
7. DESIGN PRESSURE IS 250 PSI (17.24 BAR). HYDROSTATIC TEST PRESSURE IS 325 PSI (22.4 BAR).
8. EXTERIOR FINISH:
TOP COAT: 1 MIL MINIMUM.
COLOR: SILVER



EATON FILTRATION, LLC
RONNINGEN-PETTER PRODUCTS
9151 SHAVER ROAD
PORTAGE, MICHIGAN 49024-6798 USA

THIS DRAWING AND ALL INFORMATION THEREON IS THE PROPERTY OF EATON CORPORATION. IT IS CONFIDENTIAL AND MUST NOT BE MADE PUBLIC. THIS DRAWING IS LOANED SUBJECT TO RETURN ON DEMAND, AND IS NOT TO BE USED DIRECTLY OR INDIRECTLY, IN ANY WAY DETRIMENTAL TO THE INTERESTS OF EATON FILTRATION, LLC.

ENGINEERING APPROVAL .	DRAWN BY M. DESJARDINS	TITLE F2200IB F SERIES INTERNAL BACKWASHING INLINE MULTIPLEX FILTER UNIT			
SALES/MKTG APPROVAL .	SCALE NONE				
	ENGINEERING SPECIFICATION	DATE 05/13/05	SIZE A	DWG FILENAME F-2200-IB-RE001	REV A