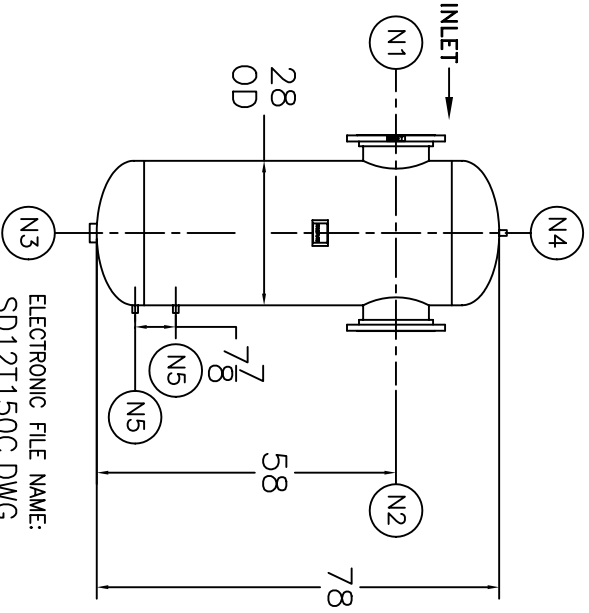
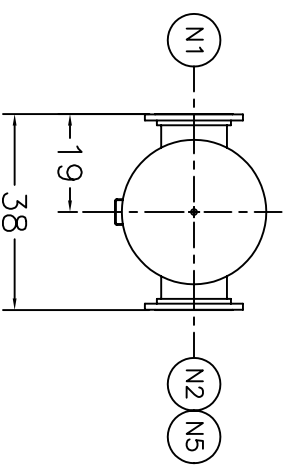


NOZZLE SCHEDULE		ITEM	QTY.	NAME	DESCRIPTION
N1	1	INLET	12" - 150# RFSO, B16.5 W/ STD WT PIPE		
N2	1	OUTLET	12" - 150# RFSO, B16.5 W/ STD WT PIPE		
N3	1	DRAIN	2-1/2" - NPT 3000# COUPLING		
N4	1	VENT	1/2" - NPT 3000# COUPLING		
N5	2	W.G. CONNS.	1/2" - NPT 3000# COUPLING		

REV	DATE	CHANGE	ECR	BY	APP
A	03/19/02	NEW RELEASE	A350	AB	DE
B	11/1/05	REVISED TITLE BLOCK	D507	FM	LH




NOTES:

- UNITS ARE TO BE DESIGNED, FABRICATED, & "U" STAMPED (IF REQ'D) IN ACCORDANCE WITH ASME B & PV CODE, SECTION VIII, DIVISION 1 IN COMPLIANCE TO CURRENT PUBLISHED ADDENDA.
- ALL DIMENSIONS ARE IN INCHES.
- ALL BOLT HOLES ARE TO STRADDLE NATURAL CENTERLINES.
- SHIPPING WEIGHT: 1,680 POUNDS.
- DESIGN DATA:
 DESIGN PRESSURE- 150 PSIG
 DESIGN TEMPERATURE- 450°F
 MIN. DESIGN METAL TEMP.- -20°F AT 150 PSIG
 HYDROTEST PRESSURE- 195 PSIG
 CORROSION ALLOWANCE- 0 INCHES
- MATERIAL: CARBON STEEL.

CUSTOMER:
 REG. NO.:
 P.O. NO.:
 TAG NO.:
 PART NO.: 12T150C & 12T150CU

ELECTRONIC FILE NAME:
 SD12T150C.DWG
 TOLERANCES UNLESS OTHERWISE SPECIFIED
 PER ENGINEERING STANDARD ES- - - -

UNAUTHORIZED USE, MANUFACTURE OR
 REPRODUCTION IN WHOLE OR IN PART IS
 PROHIBITED. DRAWING, DESIGN AND
 OTHER DISCLOSURES PROPERTY OF
 EATON FILTRATION, LLC

		EATON FILTRATION, LLC 900 FAIRMOUNT AVENUE, ELIZABETH, NEW JERSEY 07207					
		NAME 12" TYPE "T" GAS/LIQUID SEPARATOR, 150# FLG, CSTL					
DRAWN	AB	DATE	03/21/02	CHECKED	FJM	DATE	03/21/02
APP	DE	DATE	03/21/02	SCALE	NTS	ECR	A350
SIZE	DWG	NO		SD12T150C		REV	B