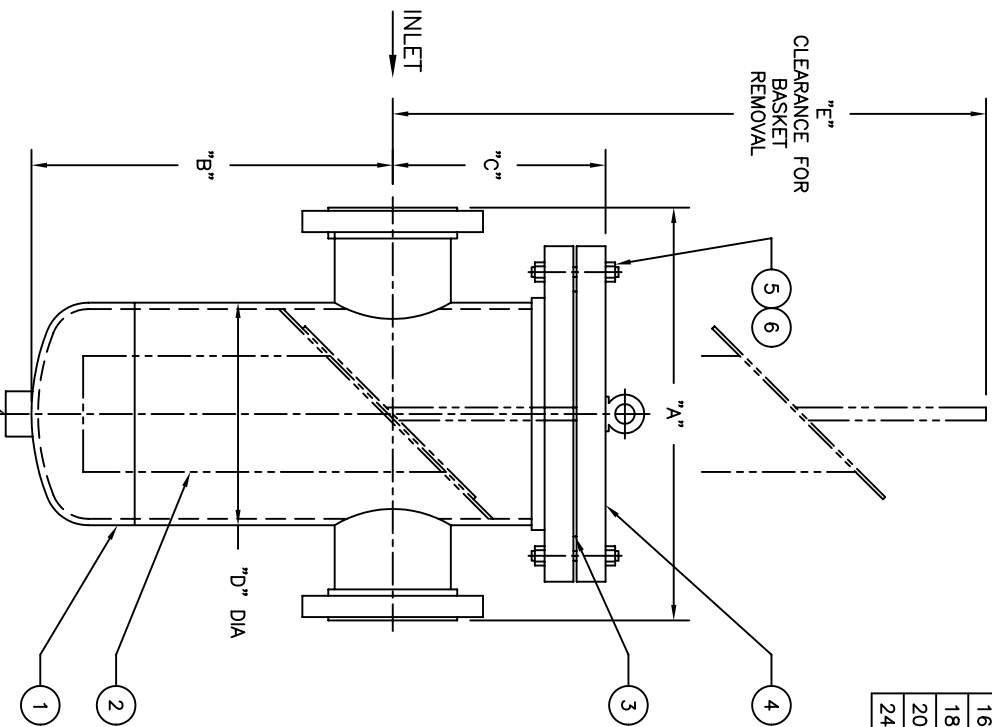


NO.	PART NAME	MATERIAL
1	BODY	CARBON STEEL
2	BASKET	
	PERF. DIA.	
	MESH	
3	GASKET	NON-ASBESTOS
4	COVER	CARBON STEEL
5	STUDS	SA 193 B7
6	NUTS	SA 194 2H



PIPE SIZE (NOMINAL)	DIMENSIONS						APPROX. WEIGHT LBS. KG	PART NO.
	A IN. MM	B IN. MM	C IN. MM	D IN. MM	E IN. MM	F (NOM.) IN. MM		
2 (50mm)	14.00 / 356	12.00 / 305	7.00 / 178	6.63 / 168	23.00 / 584	1/2 (15)	110 / 49.9	ST090020BR3BA
3 (80mm)	15.00 / 381	12.50 / 318	8.00 / 203	6.63 / 168	24.00 / 610	1/2 (15)	120 / 54.4	ST090030BR3BA
4 (100mm)	16.00 / 406	14.00 / 356	8.25 / 210	8.63 / 219	28.00 / 711	1 (25)	205 / 93.0	ST090040BR3BA
5 (125mm)	16.00 / 406	15.00 / 381	9.50 / 241	10.75 / 273	32.00 / 813	1 (25)	275 / 124.7	ST090050BR3BA
6 (150mm)	20.00 / 508	17.00 / 432	9.50 / 241	10.75 / 273	34.00 / 864	1 (25)	290 / 131.5	ST090060BR3BA
8 (200mm)	22.00 / 559	21.00 / 533	11.00 / 279	12.75 / 324	41.00 / 1041	1-1/2 (40)	410 / 186.0	ST090080BR3BA
10 (250mm)	32.00 / 813	25.00 / 635	13.00 / 330	16.00 / 406	47.50 / 1207	1-1/2 (40)	700 / 317.5	ST090100BR3BA
12 (300mm)	35.00 / 889	28.00 / 711	14.50 / 368	18.00 / 457	53.00 / 1346	1-1/2 (40)	890 / 403.7	ST090120BR3BA
14 (350mm)	37.00 / 940	33.00 / 838	15.75 / 400	20.00 / 508	61.00 / 1549	2 (50)	1100 / 499.0	ST090140BR3BA
16 (400mm)	42.00 / 1067	36.00 / 914	18.25 / 464	24.00 / 610	68.00 / 1727	2 (50)	1500 / 680.4	ST090160BR3BA
18 (450mm)	42.00 / 1067	39.00 / 991	18.25 / 464	24.00 / 610	70.00 / 1778	2 (50)	1550 / 703.1	ST090180BR3BA
20 (500mm)	43.00 / 1092	44.00 / 1118	23.25 / 591	30.00 / 762	82.00 / 2083	2 (50)	2250 / 1020	ST090200BR3BA
24 (600mm)	48.00 / 1219	60.00 / 1524	23.25 / 591	30.00 / 762	96.00 / 2438	2 (50)	2570 / 1165	ST090240BR3BA

NOTES :

- UNITS ARE DESIGNED IN ACCORDANCE WITH ASME SECT. VIII, DIV. I OF BOILER PRESSURE VESSEL. CODE & IN COMPLIANCE TO CURRENT PUBLISHED ADDENDA .
- CODE STAMPED VESSEL AVAILABLE.
- ALL DIMENSIONS ARE IN INCHES / MM.
- INLET / OUTLET FLANGES PER ANSI B16.5.
- ALL BOLT HOLES STRADDLE NATURAL CENTERLINES.
- DESIGN PRESSURE : 150 PSIG @ 150° F (10.3 BAR @ 65.6°C)
MDMT : -20°F @ 150 PSIG (MDMT : -28.9°C @ 10.3 BAR)

CERTIFIED FOR:

P.O. NO.:
REG. NO.:
QUOTE NO.:
TAG NO.:

EATON

EATON FILTRATION, LLC
900 FAIRMOUNT AVENUE, ELIZABETH, NEW JERSEY 07207

NAME
MODEL 90 BASKET STRAINER
150# RF FLANGE / BOLTED COVER
SIZES 2" THRU 24" CARBON STEEL

DRAWN FM DATE 1/5/98 CERT. LF DATE 1/5/98

SIZE DWG NO. A REV C

ELECTRONIC FILE NAME: SD090BC1.DWG
REF. ECR D507 DATE 11/1/05

UNAUTHORIZED USE, MANUFACTURE OR REPRODUCTION IN WHOLE OR IN PART IS PROHIBITED. DRAWING, DESIGN AND OTHER DISCLOSURES PROPERTY OF EATON FILTRATION, LLC

SD090BC1