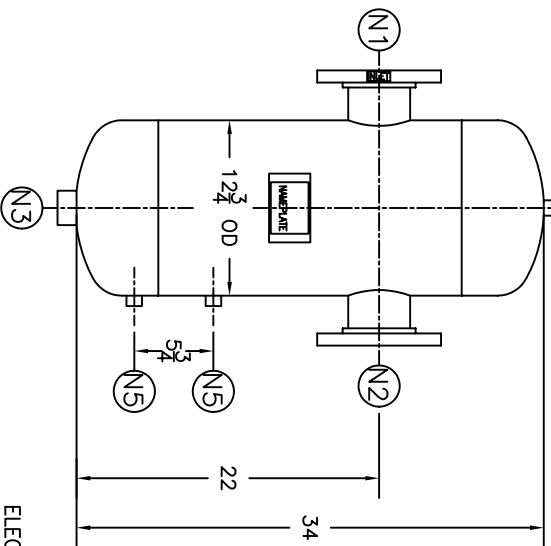
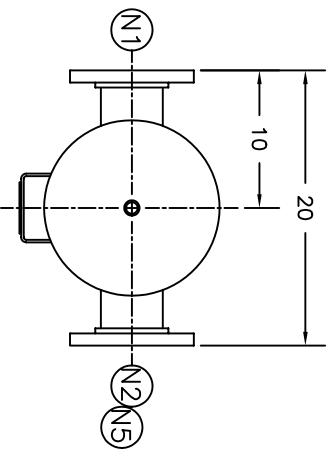


NOZZLE SCHEDULE			
ITEM	QTY.	NAME	DESCRIPTION
N1	1	INLET	4" - 150# RF SO ASME B16.5
N2	1	OUTLET	4" - 150# RF SO ASME B16.5
N3	1	DRAIN	1-1/2" NPT 3000# COUPLING
N4	1	VENT	1/2" NPT 3000# COUPLING
N5	2	W.G. CONNECTIONS	1/2" NPT 3000# COUPLING

REV	DATE	CHANGE	ECR	BY	APP
A	01/10/02	NEW ISSUE	A128	GC	VH
B	11/1/05	REVISED TITLE BLOCK	D507	FM	LH




NOTES:

1. UNITS ARE TO BE DESIGNED, FABRICATED, AND "U" OR "UM" STAMPED (IF REQ'D) IN ACCORDANCE WITH ASME B & PV CODE, SECTION VIII, DIVISION 1 IN COMPLIANCE TO CURRENT PUBLISHED ADDENDA.
2. ALL DIMENSIONS ARE IN INCHES.
3. ALL BOLT HOLES ARE TO STRADDLE NATURAL CENTERLINES.
4. SHIPPING WEIGHT: 115 POUNDS.
5. DESIGN DATA:
 DESIGN PRESSURE- 150 PSIG
 DESIGN TEMPERATURE- 300° F
 MIN. DESIGN METAL TEMP.-20° F @ 150 PSIG
 HYDROTEST PRESSURE- 195 PSIG
 CORROSION ALLOWANCE- 0 INCHES
6. MATERIAL: 316 STAINLESS STEEL.

ELECTRONIC FILE NAME:
SD4T150S6.DWG
TOLERANCES UNLESS OTHERWISE SPECIFIED
PER ENGINEERING STANDARD ES- --

UNAUTHORIZED USE, MANUFACTURE OR REPRODUCTION IN WHOLE OR IN PART IS PROHIBITED. DRAWING, DESIGN AND OTHER DISCLOSURES PROPERTY OF EATON FILTRATION, LLC

		EATON FILTRATION, LLC 900 FARMOUNT AVENUE, ELIZABETH, NEW JERSEY 07207					
		NAME 4" TYPE "T" GAS/LIQUID SEP. 150# RF FLG. 316 SSSL					
DRAWN	GC	DATE	01/10/02	CHECKED	FJM	DATE	01/10/02
APP	VH	DATE	01/11/02	SCALE	NTS	ECR	A128
SIZE	DWG	NO		SD4T150S6		REV	B

CUSTOMER:
 REG. NO.:
 P.O. NO.
 TAG NO.:
 PART NO.: 4T150S6, 4T150S6U, & 4T150S6M