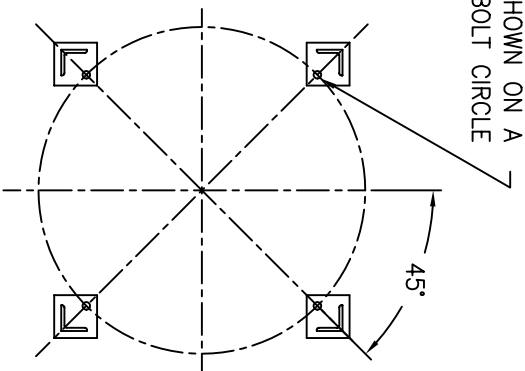


(4) 7/8"  $\phi$  [22 $\phi$ ] BOLT HOLES  
LOCATED AS SHOWN ON A  
38.13 $\phi$  [969 $\phi$ ] BOLT CIRCLE



SECTION B-B

| ITEM | PART NAME           | MATERIAL         |
|------|---------------------|------------------|
| 1    | BODY                | SA516 GR 70      |
| 2    | COVER               | SA516 GR 70      |
| 3    | O-RING              | BUNA-N           |
| 4    | PIN                 | SA193 B7 ZINC PL |
| 5    | SNAP RING           | STEEL ZINC PL    |
| 6    | BASKET RESTRAINER   | 316 SS           |
| 7    | FILTER BAG RETAINER | 316 SS           |
| 8    | EYE BOLT            | SA193 B7 ZINC PL |
| 9    | HEX NUT             | SA194 2H ZINC PL |
| 10   | WASHER              | STEEL ZINC PL    |
| 11   | DAVIT ASSEMBLY      | CARBON STEEL     |

**NOTES:**

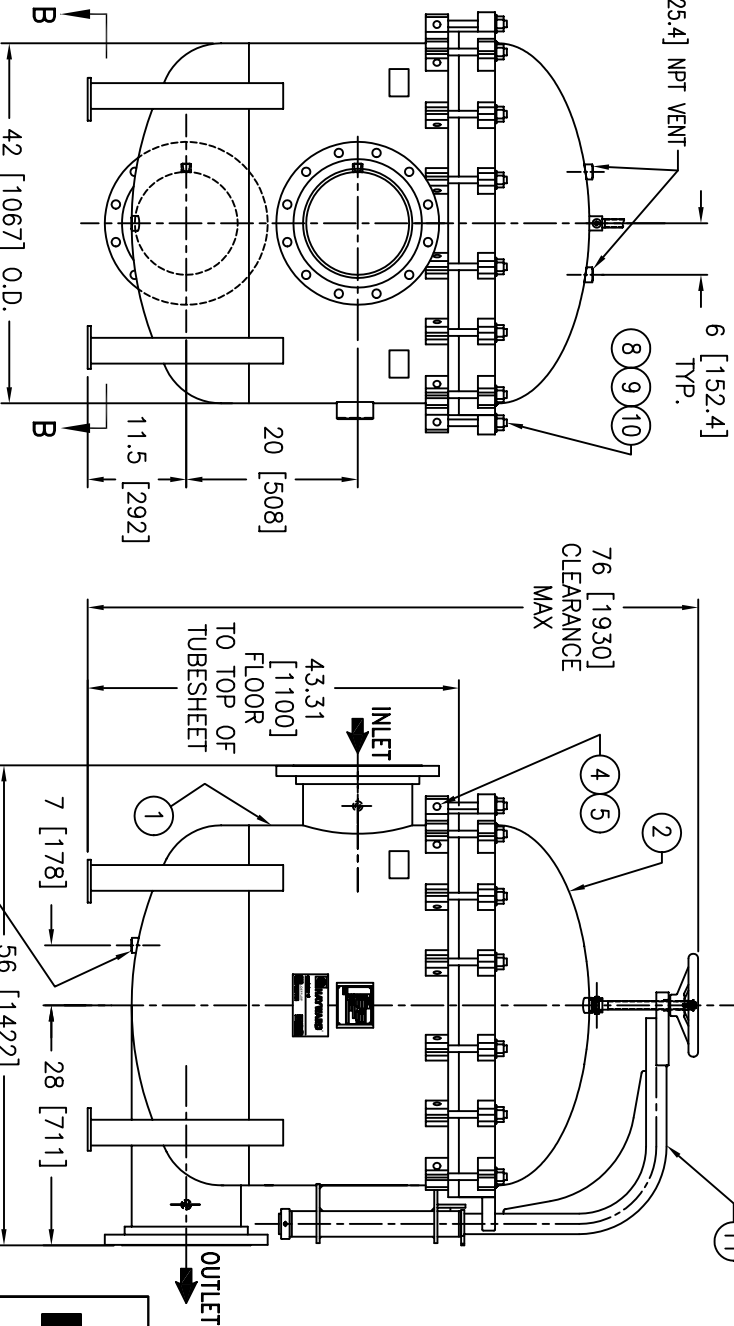
1. UNITS ARE TO BE DESIGNED, FABRICATED & "U" STAMPED IN ACCORDANCE WITH ASME SECT. VIII, DIV. 1 BOILER & PRESSURE VESSEL CODE, IN COMPLIANCE TO LATEST ADDENDA.
2. INLET / OUTLET FLANGE CONNECTIONS PER ANSI B 16.5.
3. DESIGN PRESSURE: 150 PSI (MAWP)  
DESIGN TEMPERATURE 250° F.  
MDMT -- -20° F @ 150 PSI.
4. ALL DIMENSIONS ARE IN INCHES / (MM).
5. ALL BOLT HOLES ARE TO STRADDLE NATURAL CENTERLINES.
6. APPROX. WEIGHT (DRY) 1875 LB. (850 KG.)
7. PAINT C/STL. PER HAYWARD STANDARD ES-301.

**CERTIFIED FOR:**

P.O. NO.:  
REG. NO.:  
QUOTE NO.:  
TAG NO.:  
VESSEL CODE: MBF-1602-CS10-120A-UT-13HD  
PART NUMBER: F3AV1600004



**EATON FILTRATION, LLC**  
900 FARMOUNT AVENUE, ELIZABETH, NEW JERSEY 07207  
NAME: MAXILINE MBF1602HD FILTER VESSEL  
12" 150# RF INLET / TANGENTIAL OUTLET  
CARBON STEEL



ELECTRONIC FILE NAME: HD1612TC.DWG  
REF. ECR D666 DATE 01/20/06

UNAUTHORIZED USE, MANUFACTURE OR REPRODUCTION IN WHOLE OR IN PART IS PROHIBITED. DRAWING, DESIGN AND OTHER DISCLOSURES PROPERTY OF EATON FILTRATION, LLC

| SIZE | DWG | DATE     | CERT. | LF | DATE    | REV |
|------|-----|----------|-------|----|---------|-----|
| A    | VA  | 11/21/00 |       |    | 1/24/01 | C   |

HD1612TC