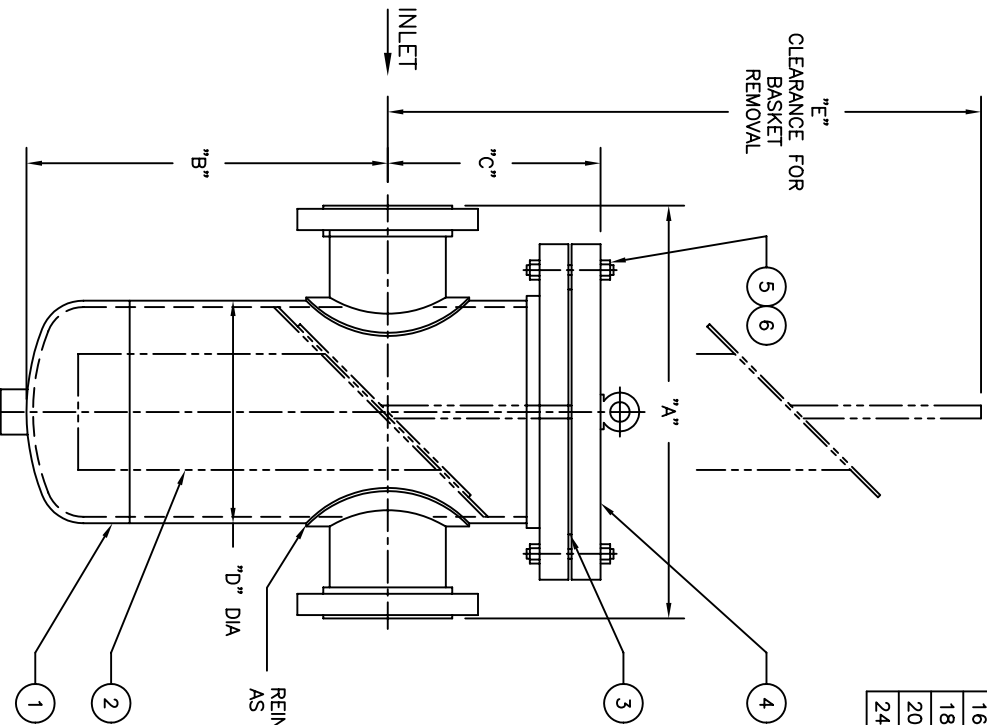


NO.	PART NAME	MATERIAL
1	BODY	CARBON STEEL
2	BASKET	
	PERF. DIA.	
	MESH	
3	GASKET	NON-ASBESTOS
4	COVER	CARBON STEEL
5	STUDS	SA 193 B7
6	NUTS	SA 194 2H



PIPE SIZE (NOMINAL)	DIMENSIONS						APPROX. WEIGHT LBS. KG	PART NO.
	A IN. MM	B IN. MM	C IN. MM	D IN. MM	E IN. MM	F (NOM.) IN. MM		
2 (50mm)	14.00 / 356	12.00 / 305	9.00 / 229	6.63 / 168	26.00 / 660	1/2 (15)	160 / 72.6	ST090020DR3BA
3 (80mm)	15.00 / 381	12.50 / 318	9.00 / 229	6.63 / 168	26.00 / 660	1/2 (15)	175 / 79.4	ST090030DR3BA
4 (100mm)	16.00 / 406	14.00 / 356	9.50 / 241	8.63 / 219	28.00 / 711	1 (25)	290 / 131.5	ST090040DR3BA
5 (125mm)	17.50 / 445	15.00 / 381	11.00 / 279	10.75 / 273	33.50 / 851	1 (25)	400 / 181.4	ST090050DR3BA
6 (150mm)	21.00 / 533	17.00 / 432	11.00 / 279	10.75 / 273	35.50 / 902	1 (25)	425 / 192.8	ST090060DR3BA
8 (200mm)	23.00 / 584	21.00 / 533	12.50 / 318	12.75 / 324	42.50 / 1080	1-1/2 (40)	605 / 274.4	ST090080DR3BA
10 (250mm)	33.00 / 838	25.00 / 635	14.50 / 368	16.00 / 406	49.00 / 1245	1-1/2 (40)	1025 / 464.9	ST090100DR3BA
12 (300mm)	36.00 / 914	28.00 / 711	16.00 / 406	18.00 / 457	54.50 / 1384	1-1/2 (40)	1540 / 698	ST090120DR3BA
14 (350mm)	38.00 / 965	33.00 / 838	17.50 / 445	20.00 / 508	62.75 / 1594	2 (50)	1700 / 770	ST090140DR3BA
16 (400mm)	43.00 / 1092	36.00 / 914	20.00 / 508	24.00 / 610	69.75 / 1772	2 (50)	2500 / 1133	ST090160DR3BA
18 (450mm)	43.00 / 1092	39.00 / 991	20.00 / 508	24.00 / 610	71.75 / 1822	2 (50)	2750 / 1245	ST090180DR3BA
20 (500mm)	44.50 / 1130	44.00 / 1118	26.00 / 660	30.00 / 762	84.50 / 2146	2 (50)	3600 / 1631	ST090200DR3BA
24 (600mm)	49.75 / 1264	60.00 / 1524	26.00 / 660	30.00 / 762	98.50 / 2502	2 (50)	4150 / 1880	ST090240DR3BA

NOTES :

- UNITS ARE DESIGNED IN ACCORDANCE WITH ASME SECT. VIII, DIV. I OF BOILER PRESSURE VESSEL. CODE & IN COMPLIANCE TO CURRENT PUBLISHED ADDENDA .
- CODE STAMPED VESSEL AVAILABLE.
- ALL DIMENSIONS ARE IN INCHES / MM.
- INLET / OUTLET FLANGES PER ANSI B16.5.
- ALL BOLT HOLES STRADDLE NATURAL CENTERLINES.
- DESIGN PRESSURE : 375 PSIG @ 150° F (25.9 BAR @ 65.6°C)

MDMT : -20°F @ 375 PSIG
(MDMT : -28.9°C @ 25.9 BAR)

CERTIFIED FOR:

P.O. NO.:

REG. NO.:

QUOTE NO.:

TAG NO.:

ELECTRONIC FILE NAME: SD090BC3.DWG
REF. ECR D507 DATE 11/1/05

UNAUTHORIZED USE, MANUFACTURE OR REPRODUCTION IN WHOLE OR IN PART IS PROHIBITED. DRAWING, DESIGN AND OTHER DISCLOSURES PROPERTY OF EATON FILTRATION, LLC

EATON		EATON FILTRATION, LLC	
900 FAIRMOUNT AVENUE, ELIZABETH, NEW JERSEY 07207		MODEL 90 BASKET STRAINER	
NAME		300# RF FLANGE / BOLTED COVER	
DRAWN		SIZES 2" THRU 24" CARBON STEEL	
SIZE	DWG NO	DATE	REV
A	FM	1/5/98	D
		CERT.	
		LF	
		DATE	
		1/5/98	
SD090BC3			