

Enclosed Plate and Frame Filter BECO INTEGRA® PLATE 1000 EP

Stainless Steel Chassis, Plastic Filter Plates, and Cake Frames

BECO INTEGRA PLATE 1000 EP enclosed plate and frame filter is the depth filtration system for critical filtration tasks in the pharmaceutical and biotech, chemical, cosmetics, and food industries.

BECO INTEGRA PLATE 1000 EP is a multi-sheet filter with external chamber. Depth filter sheets seal the product channels. Gaskets at the external chamber seal the entire filter package.



Special Features

- CIP of filter package without depth filter sheets
- Complete drainage of filter due to unique filter plate design
- Safe operation: No drip loss due to sealed external chamber and automatic hydraulic pressure regulation
- Easy handling and good cleanability thanks to ergonomic design of chassis, and open support grid of filter plates; cake discharge downwards into tray underneath of filter package
- High flexibility: The filter can be used as a sheet filter or as a pre-coat filter. For pre-coating/removing of high particle load, cake frames in different widths are available
- BECO INTEGRA PLATE 1000 EP filter is designed and manufactured according to the cGMP guidelines and the FDA regulations

Customization or additional components allow for system expansion or complete systems according to customer specifications



Technical Data

| | |
|---|--|
| Operating pressure/temperature: | max. 72 psi (500 kPa/5 bar) at 104 °F (40 °C) max. 29 psi (200 kPa/2 bar) at 140 °F (60 °C) |
| Differential pressure/temperature: | max. 300 kPa (3 bar) bei 40 °C |
| Filter area per sheet: | 8.07 ft² (0.75 m²) |

Materials

| | |
|----------------------------------|---|
| Product contacting parts: | Polypropylene/Stainless Steel AISI 316L |
| Sonstige Teile: | Stainless Steel AISI 304 |
| Dichtungen/ O-Ringe: | Silicone, EPDM (FDA listed), Viton |

| Type | Filter area | | Cake volume * | | Chassis size | Filter plates/ cake frames | Depth filter sheets 680 x 779 mm | | Weight for Standard Type | |
|---------------------------------------|--------------------------------|-------------------|---------------|--------|--------------|-------------------------------|-------------------------------------|--------|-----------------------------|---------|
| | ft ² | (m ²) | gal | (l) | | | qty | qty | ≈ lb | (kg) |
| 1000 SF plate and frame filter | 500.52 | (46.50) | 91.93 | (348) | 1 | 30/31 | 62 | 14,548 | (6,599) | |
| | 791.15 | (73.50) | 145.56 | (551) | 2 | 48/49 | 98 | 16,448 | (7,461) | |
| | with 0.79" (20 mm) cake frames | 1,081.77 | (100.50) | 198.92 | (753) | 3 | 66/67 | 134 | 18,571 | (8,424) |
| | | 1,372.40 | (127.50) | 252.55 | (956) | 4 | 84/85 | 170 | 20,472 | (9,286) |
| 1000 ASF frame filter | 419.80 | (39.00) | 128.65 | (487) | 1 | 25/26 | 52 | 14,422 | (6,542) | |
| | 661.98 | (61.50) | 202.88 | (768) | 2 | 40/41 | 82 | 16,241 | (7,367) | |
| | with 1.18" (30 mm) cake frames | 920.31 | (85.50) | 282.14 | (1,068) | 3 | 56/57 | 114 | 18,375 | (8,335) |
| | | 1,162.50 | (108.00) | 356.63 | (1,350) | 4 | 71/72 | 144 | 20,194 | (9,160) |
| 1000 ASF frame filter | 371.35 | (34.50) | 159.30 | (603) | 1 | 22/23 | 46 | 14,391 | (6,528) | |
| | 581.25 | (54.00) | 249.64 | (945) | 2 | 35/36 | 72 | 16.164 | (7,332) | |
| | with 1.57" (40 mm) cake frames | 791.15 | (73.50) | 339.73 | (1,286) | 3 | 48/49 | 98 | 18,157 | (8,236) |
| | | 1,001.04 | (93.00) | 429.81 | (1,627) | 4 | 61/62 | 124 | 19,929 | (9,040) |

* usable cake volume

Filter Plates/Cake Frames

| | Width | | Cake volume* | | Weight | |
|-------------------|-------|------|--------------|---------|--------|--------|
| | in | (mm) | gal | (l) | lb | (kg) |
| Initial/End plate | 1.10 | (28) | | | 67.9 | (30.8) |
| Filter plate | 1.10 | (28) | | | 61.3 | (27.8) |
| Cake frame | 0.79 | (20) | 2.97 | (11.25) | 22.3 | (10.1) |
| Cake frame | 1.18 | (30) | 4.95 | (18.75) | 33.5 | (15.2) |
| Cake frame | 1.57 | (40) | 6,93 | (26.25) | 44.5 | 20.2 |

* usable cake volume

Connections

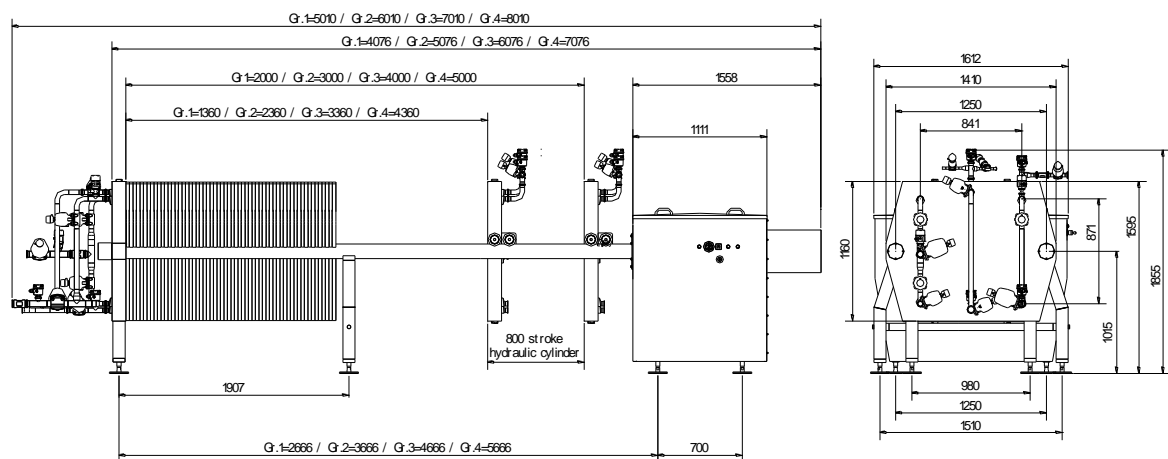
| | |
|--------------------------|--------------------------|
| Filter inlet: | TC 2,5" ISO2852/ASME BSP |
| Filter outlet: | TC 2,5" ISO2852/ASME BSP |
| External chamber: | TC 2,5" ISO2852/ASME BSP |

Other Connections

Threaded connections according to DIN 1151/11864

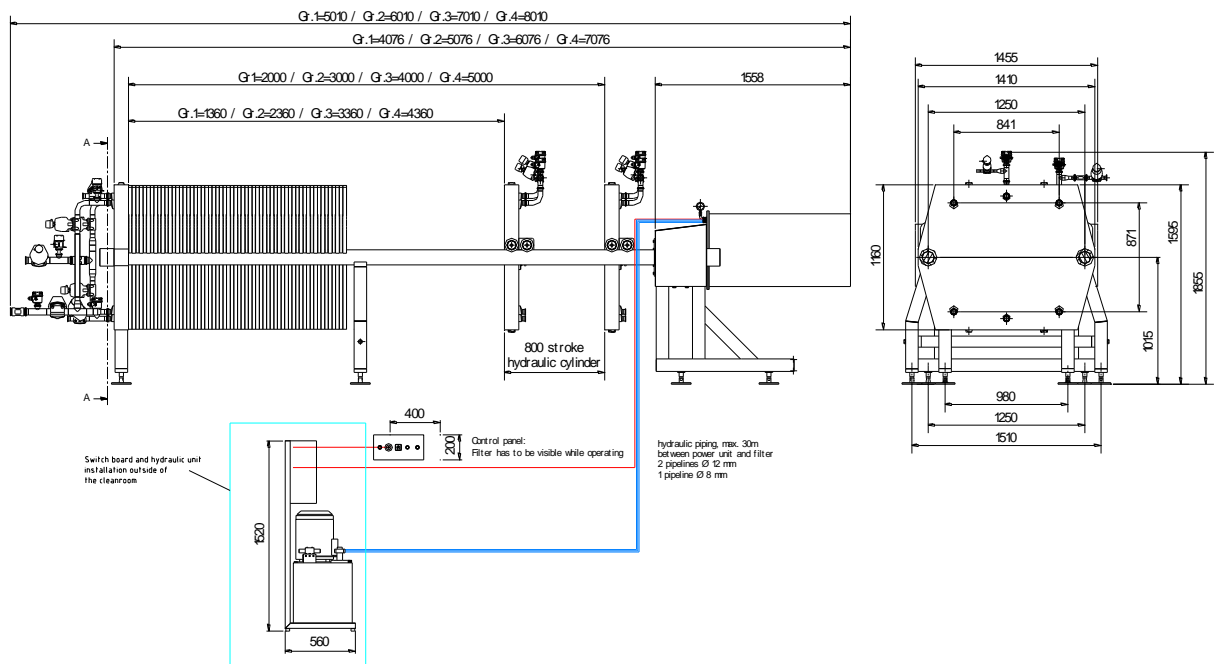
Standard type in compact design

The chassis length is always adapted to the necessary requirements. Gestelllänge wird immer auf die erforderlichen Anforderungen angepasst.



Sanitary design for the installation in cleanroom

The chassis length is always adapted to the necessary requirements.



North America

44 Apple Street
Tinton Falls, NJ 07724
Toll Free: 800 656-3344
(North America only)
Tel: +1 732 212-4700

Europe/Africa/Middle East

Auf der Heide 2
53947 Nettersheim, Germany
Tel: +49 2486 809-0

Friedensstraße 41
68804 Altlufheim, Germany
Tel: +49 6205 2094-0

An den Nahewiesen 24
55450 Langenlonsheim, Germany
Tel: +49 6704 204-0

China

No. 3, Lane 280,
Linhong Road
Changning District, 200335
Shanghai, P.R. China
Tel: +86 21 5200-0099

Singapore

4 Loyang Lane #04-01/02
Singapore 508914
Tel: +65 6825-1668

Brazil

Rua Clark, 2061 - Macuco
13279-400 - Valinhos, Brazil
Tel: +55 11 3616-8400

**For more information, please
email us at filtration@eaton.com
or visit www.eaton.com/filtration**

EN
1A2611.10
12-2016

© 2016 Eaton. All rights reserved. All trademarks and registered trademarks are the property of their respective owners. All information and recommendations appearing in this brochure concerning the use of products described herein are based on tests believed to be reliable. However, it is the user's responsibility to determine the suitability for his own use of such products. Since the actual use by others is beyond our control, no guarantee, expressed or implied, is made by Eaton as to the effects of such use or the results to be obtained. Eaton assumes no liability arising out of the use by others of such products. Nor is the information herein to be construed as absolutely complete, since additional information may be necessary or desirable when particular or exceptional conditions or circumstances exist or because of applicable laws or government regulations.



Powering Business Worldwide